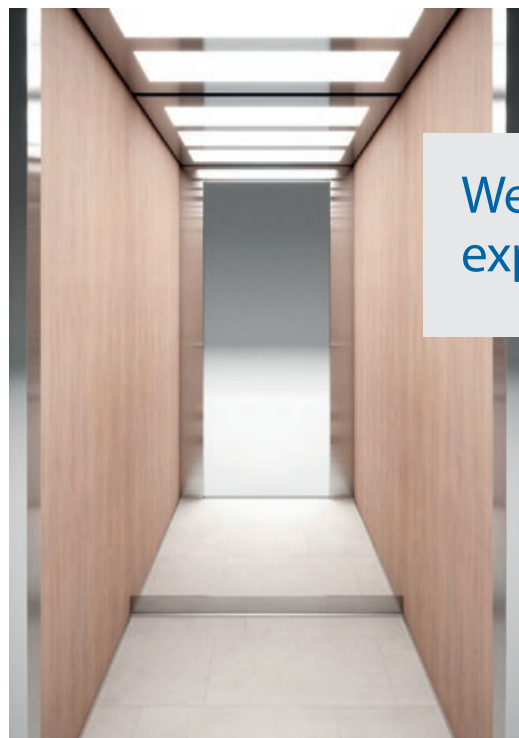


Design & Materials





Design and engineering are intertwined in every KLEEMANN project. The collection of textures and materials for cabin design presented here, offers creative tools for solutions of aesthetic excellence that cover all engineering prerequisites and adapt to European Standard EN81-20.



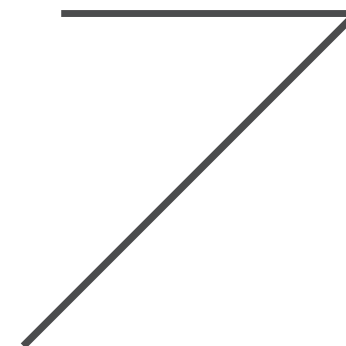
We design passenger experiences



Creative power

Design has to integrate reality, foresee tomorrow and create an elevated user experience. Rather than thinking of an elevator as a box that moves, we see it as an active social space in a building, that is used and lived by people.

Industrial designer Andreas Zapatinas joined the creative forces of KLEEMANN in 2007 and new technical and aesthetic solutions have been explored. Since then, the experienced KLEEMANN Design Team has build on these fundamental ideas taking KLEEMANN lifts to the next level.





Design options Cabins





Purity

Purity cabin, the new addition to the standard range, combines **optimized construction and upgrade of materials** with simultaneous reduction of cost and installation time. **Easy installation from inside the cabin**, minimal design with **no visible screws**, and **new packaging** that minimizes installation time, are just few of the advantages that make Purity a high-quality cabin, ideal for your lift.

Advantages

- Reduction of installation time by 20%
- Cost reduction thanks to optimized construction
- Improvements in aesthetics & materials

Optimized construction

- No openings & curves on side panels
- New ceiling with LED panel
- New design for easy replacement of lighting
- No visible screws on ceiling, car operating panels & sill
- Easy installation from inside the cabin
- Same construction for all car sling types
- Reduction of total ceiling height
- New packaging





Purity S

with Stainless Steel

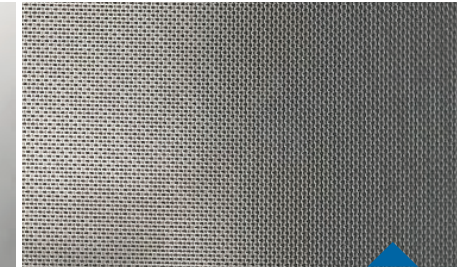
Wall Stainless Steel Satin
Floor Vinyl Cement Block
Handrail K2
Ceiling O14



Walls Stainless Steel



Mirror



Linen



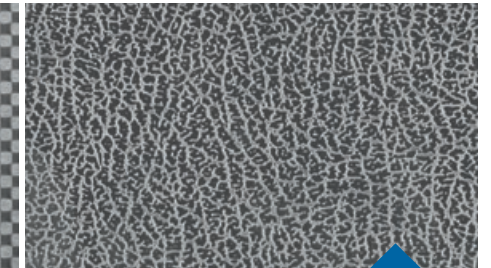
Gold Satin



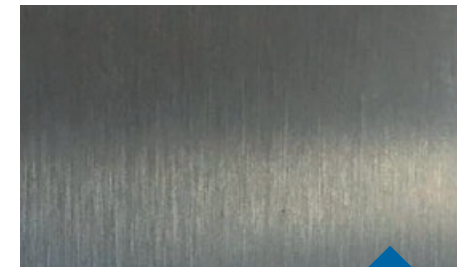
Gold Mirror



Checks



12LG



Satin

Also available at
KLEEMANN Portal

Colors may differ slightly from those shown in the brochure, owing to the limitations of the printing process.

Pictures of the materials illustrate detailed part of each material and not its rendering on the cabin surface.



Purity S

with
skinplate

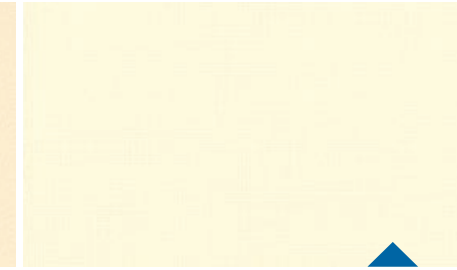
Wall Skinplate F12PPS
Floor Artificial Granite
Regal White
Handrail K2
Ceiling O14



Walls Skinplate



A67 SMA



A90 GTA



PPS13



PPS93



F12PPS



DL86



N19SA

Also available at
KLEEMANN Portal

Colors may differ slightly from those shown in the brochure, owing to the limitations of the printing process.

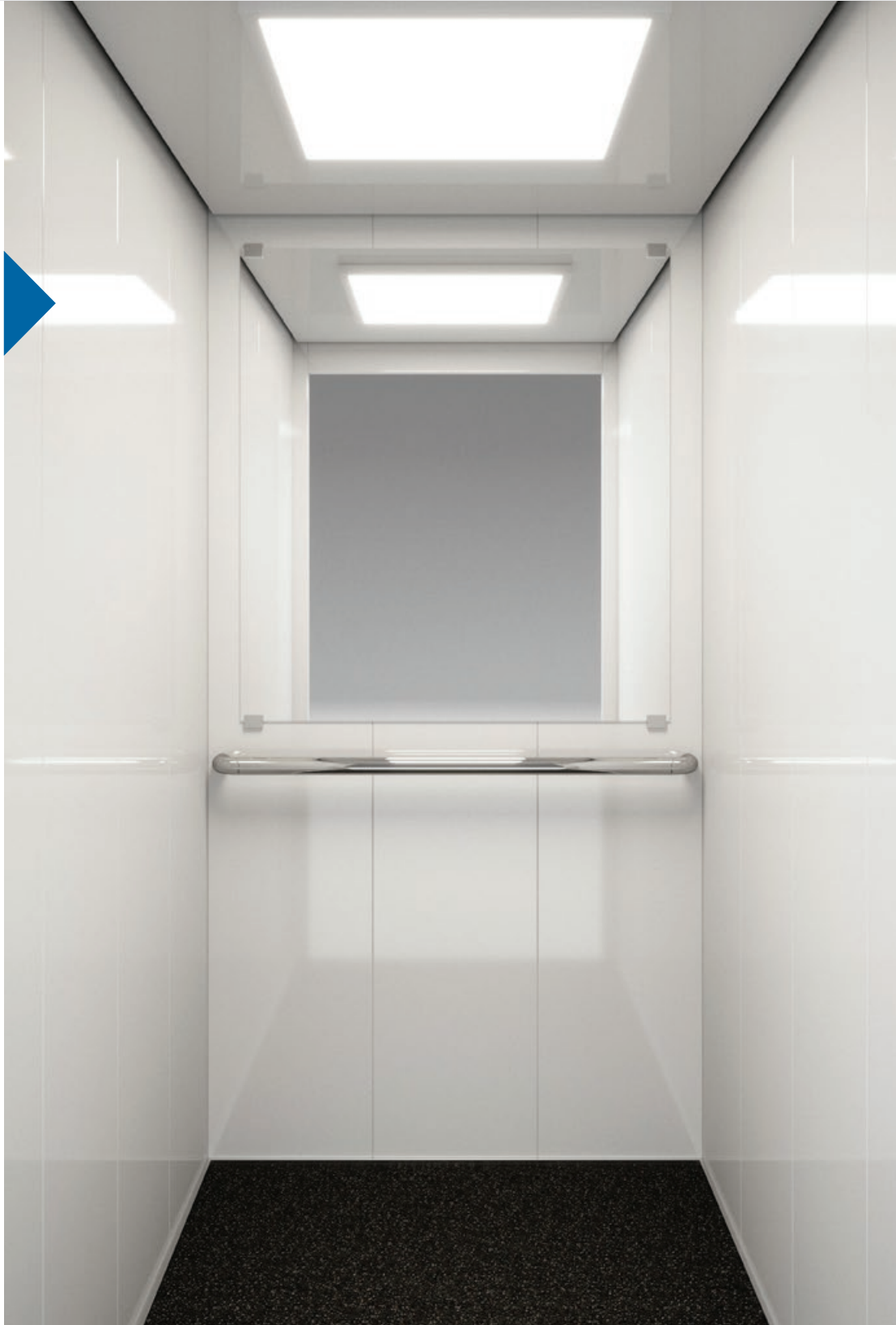
Pictures of the materials illustrate detailed part of each material and not its rendering on the cabin surface.



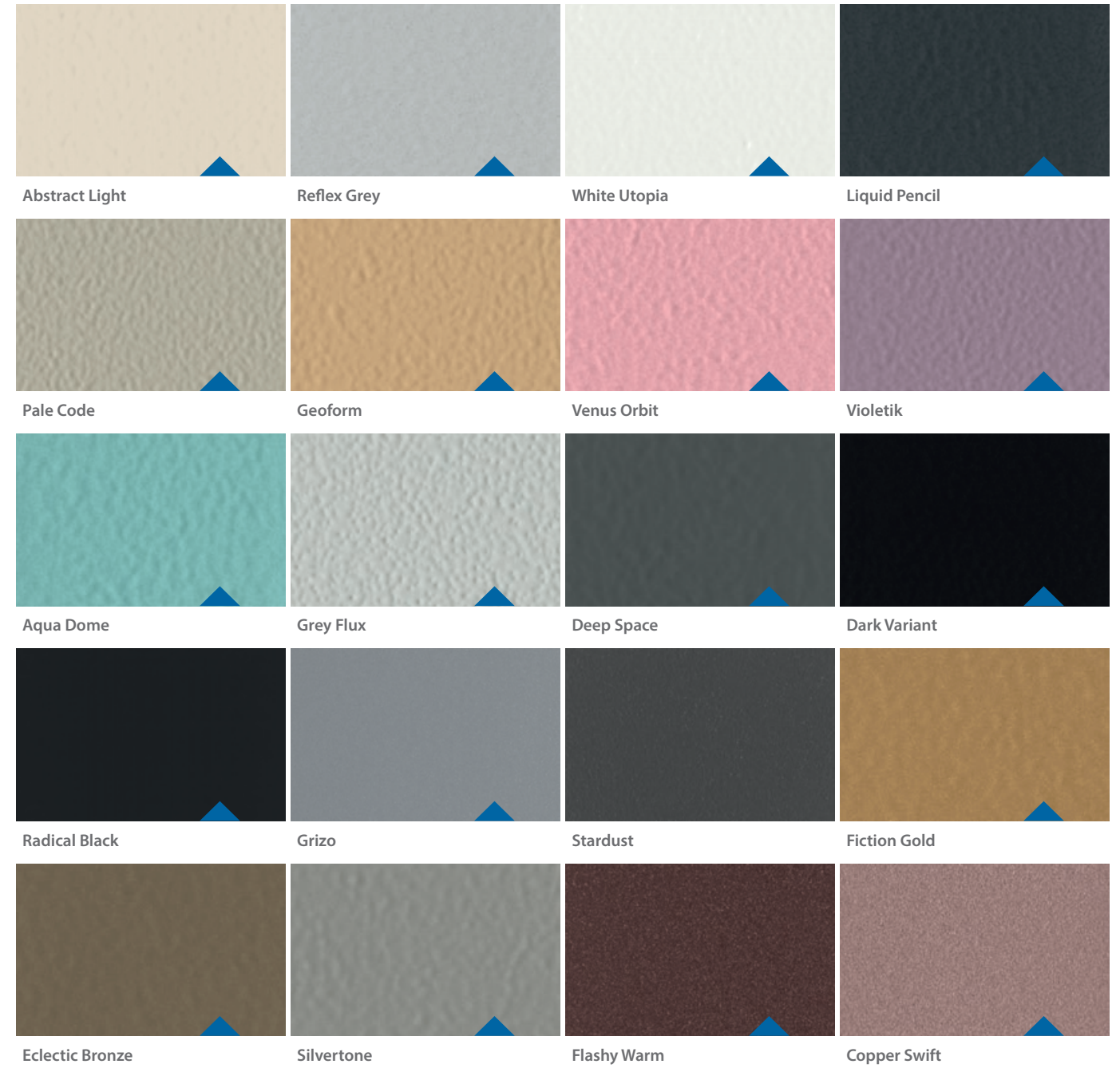
Purity S

with
paint

Wall Paint White Utopia
Floor Rubber 6801
Handrail K3
Ceiling OLP1 Led Panel



Walls Paint



Also available at
KLEEMANN Portal

Colors may differ slightly from those shown in the brochure, owing to the limitations of the printing process.

Pictures of the materials illustrate detailed part of each material and not its rendering on the cabin surface.



Purity C

with claddings

Wall Smooth Sand
Floor Cement Block
Handrail K2
Ceiling O7



Walls Wood like



Timber Variant

Smooth Sand

Hacienda Wood

Steel like

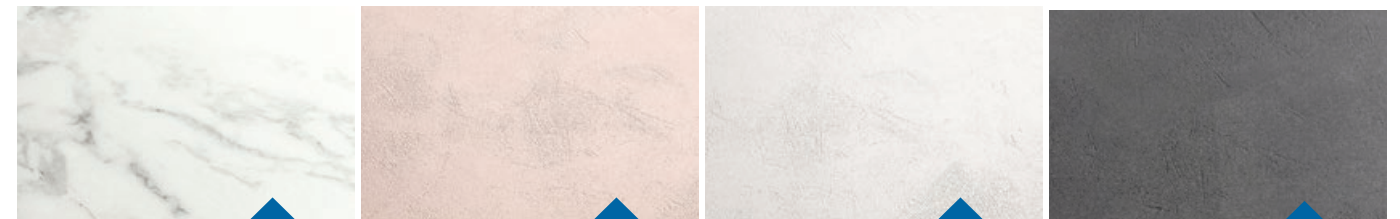


Mighty Silver

Bronzo

Oceanic Blue

Concrete like



Carrara Frost

Blush Box

Lime Light

Cloud Lime

Also available at
[KLEEMANN Portal](#)

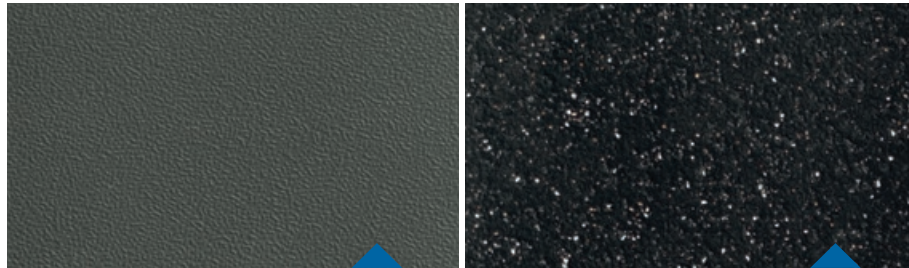
Colors may differ slightly from those shown in the brochure, owing to the limitations of the printing process.

Pictures of the materials illustrate detailed part of each material and not its rendering on the cabin surface.



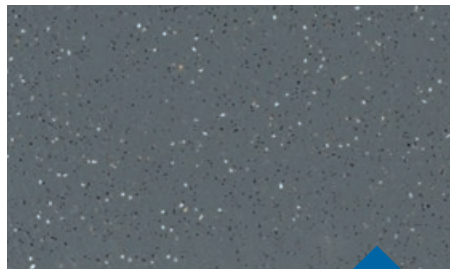
Purity Interior materials

Floors Rubbers



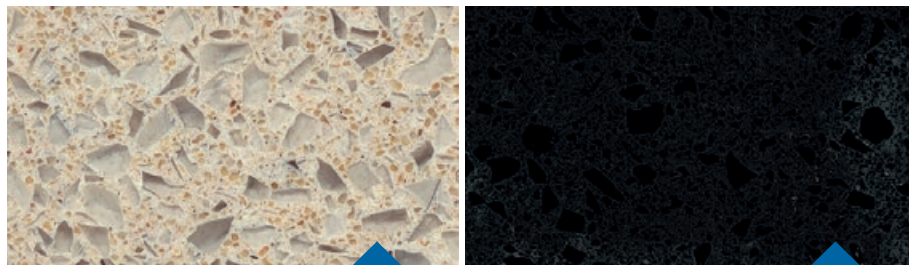
6727

6801



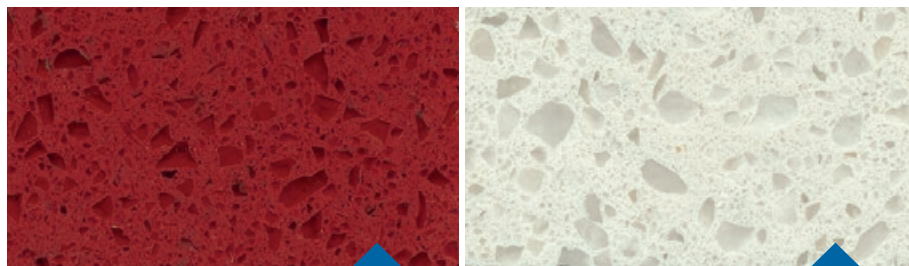
6768

Artificial Granites



Regal Beige

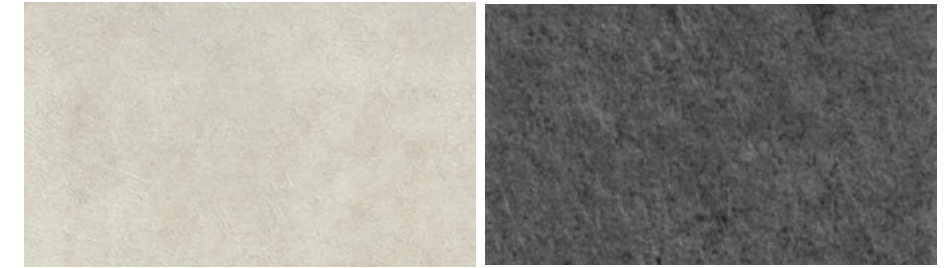
Regal Black



Regal Red

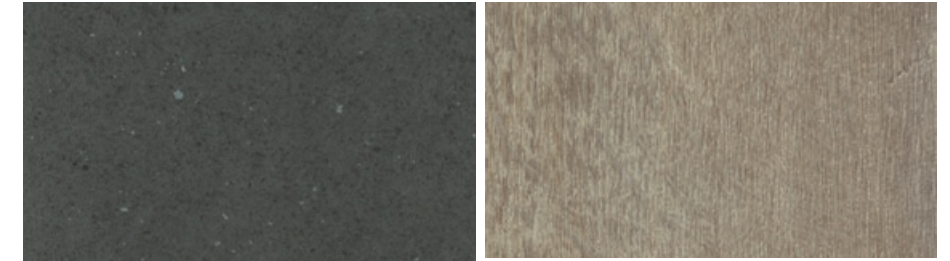
Regal White

Vinyl



Cement Block

Scivaro Grey



Dark Mineral

Oak Luxus



Mosaicon

Handrails



K2

AVAILABLE FINISHES
Mirror
Gold Satin



K3 According to EN81-70

AVAILABLE FINISHES
Mirror



K6

AVAILABLE FINISHES
Mirror

Also available at
KLEEMANN Portal

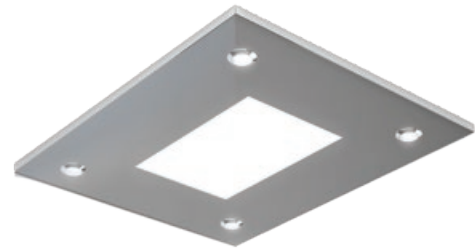
Colors may differ slightly from those shown in the brochure, owing to the limitations of the printing process.

Pictures of the materials illustrate detailed part of each material and not its rendering on the cabin surface.

Ceilings

FINISHES

- Satin
- Mirror
- Gold Mirror
- Gold Satin
- Paint



O3



O7



O10



O14



O15



O55



OLP1 (Led Panel)





KLEEMANN range of cabins is wide and versatile featuring cabin solutions that are customizable and can be delivered in record fast time. The collection comprises of cabins adaptable to the project's design specifications that are ideal for residential, commercial use or public buildings.

The varied assortment of materials offered can transform the cabin's design to fit the building ambiance and use. Multiple options for walls, floor and ceiling, offer creative freedom to compile different aesthetic style types.





A310

A310 cabin is one of the most popular choices for a practical but elegant lift solution. Combining multiple design tools, create a cabin to your own design specifications and take advantage of a wide range of laminate walls, floor and ceiling options. A great choice for residential uses and private residences, this cabin presents a versatile and cost-effective solution.

Wall HP Laminate AB 383
Floor Rubber 6727
Handrail K2
Ceiling O3



Walls HP Laminate



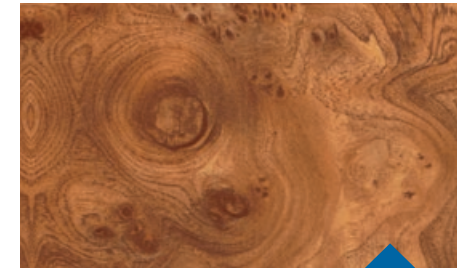
AB 387



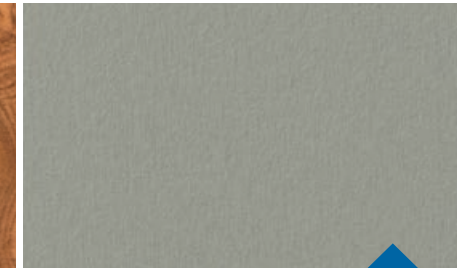
AB 383



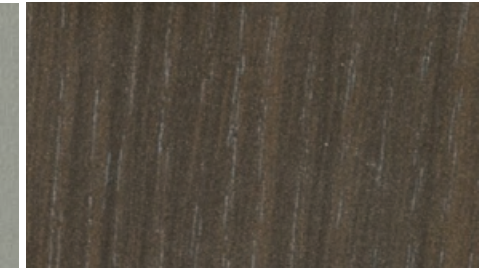
AB 659



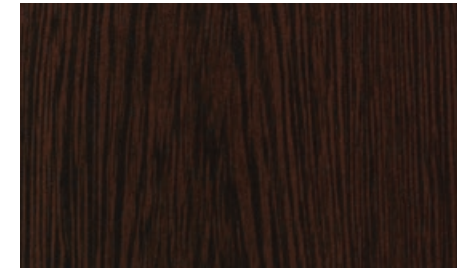
AB 1306



DU 8110



AB 1355



HD 2307

Also available at
[KLEEMANN Portal](#)

Colors may differ slightly from those shown in the brochure, owing to the limitations of the printing process.

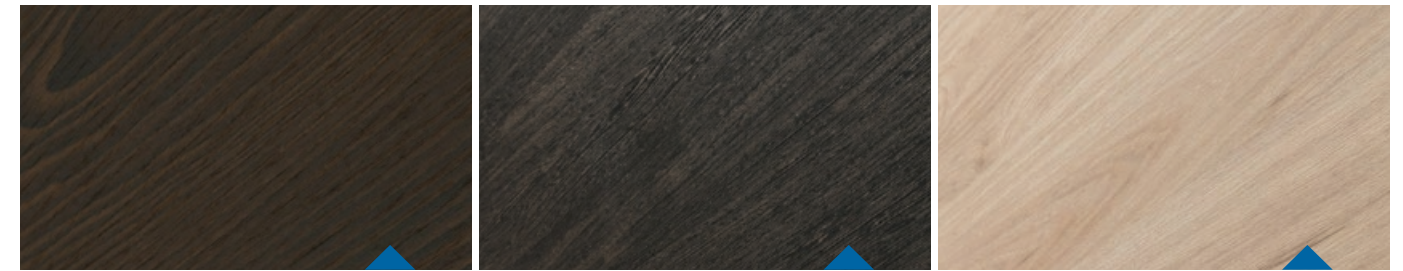
Pictures of the materials illustrate detailed part of each material and not its rendering on the cabin surface.



A510

Sophistication and intellectual design define the A510 cabin. Available in a range of wooden walls and featuring elegant stainless steel detailing, such as the classic combination of polished oak veneer and stainless steel. This cabin is ideal for commercial uses that demand a touch of finesse.

Walls Wood veneer (fire retardant)

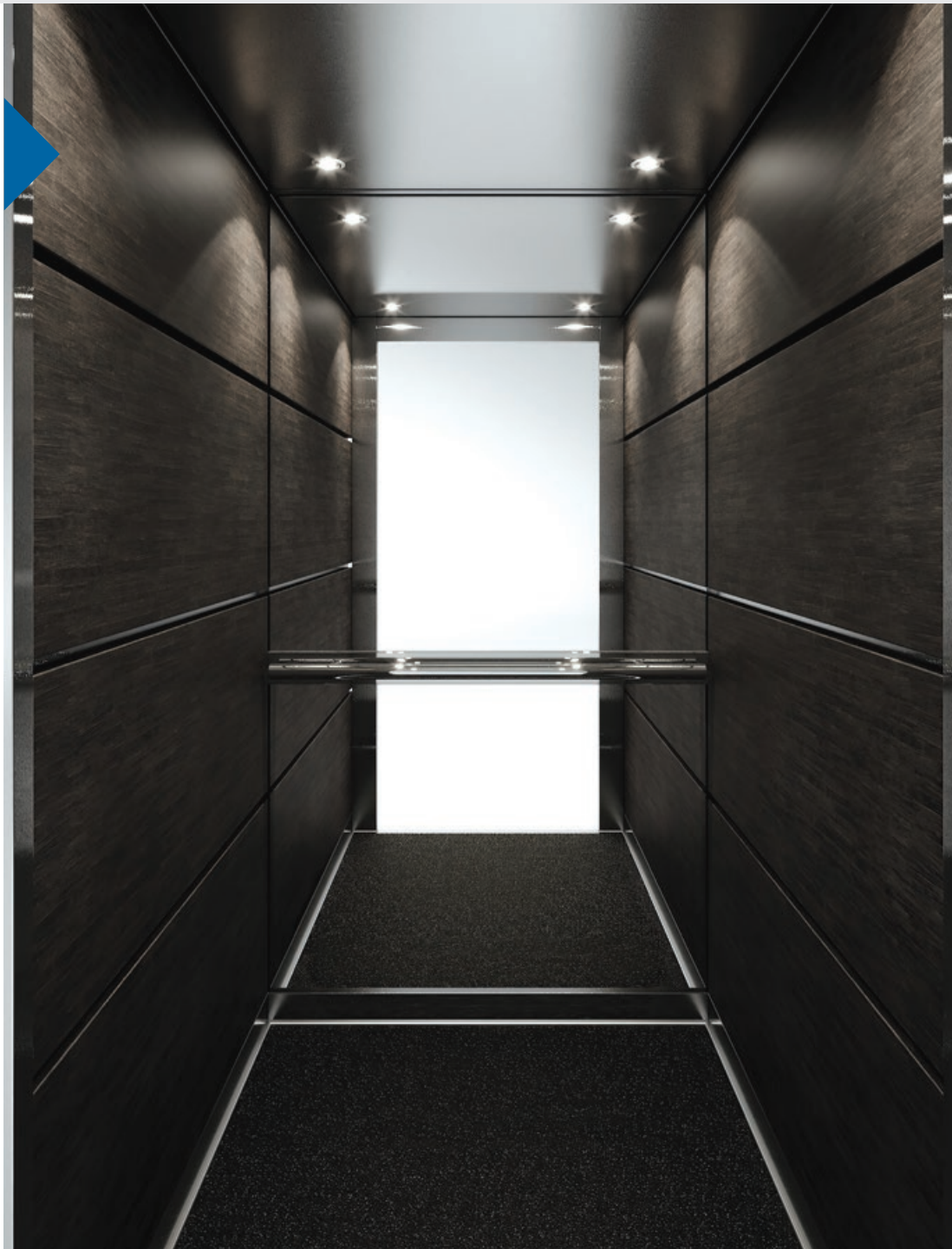


Wood Mark

Ecliptic Black

Vorion Wood

Wall Ecliptic Black
Floor Rubber 6801
Handrail K2
Ceiling O7



Also available at
[KLEEMANN Portal](#)

Colors may differ slightly from those shown in the brochure, owing to the limitations of the printing process.

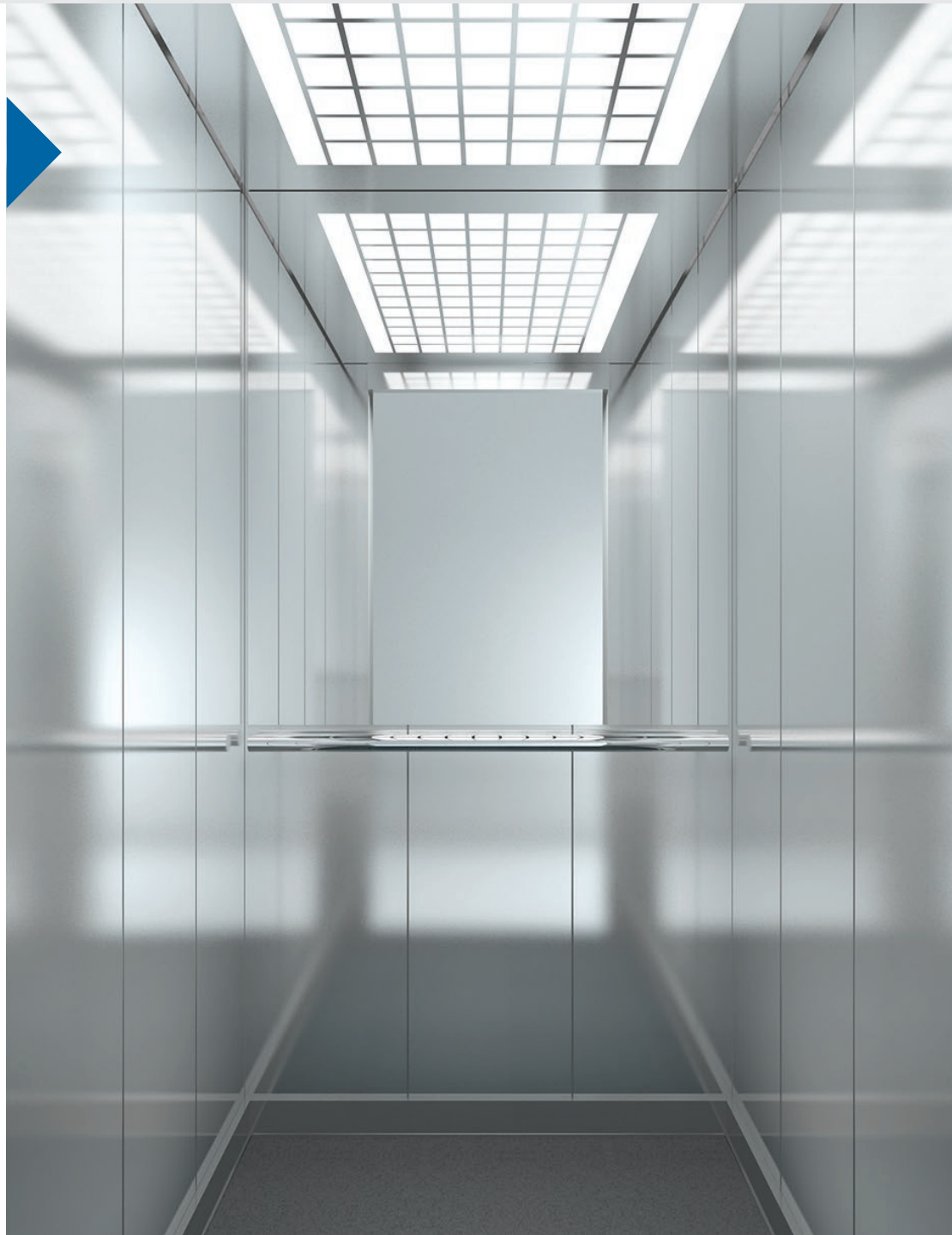
Pictures of the materials illustrate detailed part of each material and not its rendering on the cabin surface.



L310

The L310 cabin offers durability, simplicity and value for money and a range of interior materials that built to last. The popularity of this cabin lies in its functional but elegant design making it an ideal choice for all type of buildings.

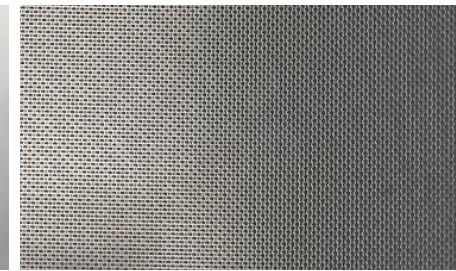
Wall Stainless Steel Satin
Floor Rubber 6768
Handrail K2
Ceiling O14



Walls Stainless Steel



Mirror



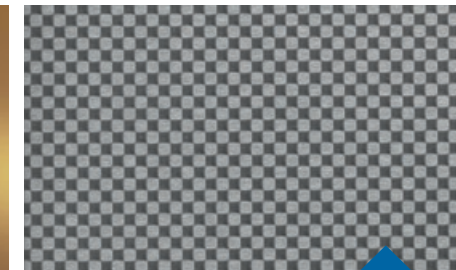
Linen



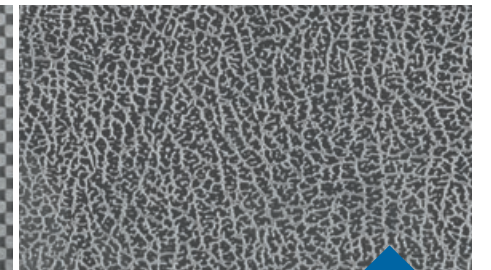
Gold Satin



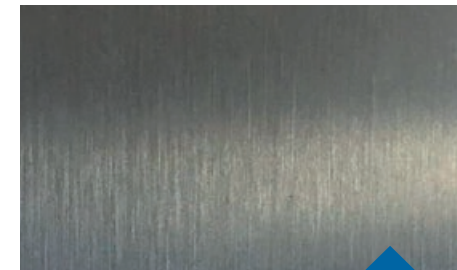
Gold Mirror



Checks



12LG



Satin

Also available at
[KLEEMANN Portal](#)

Colors may differ slightly from those shown in the brochure, owing to the limitations of the printing process.

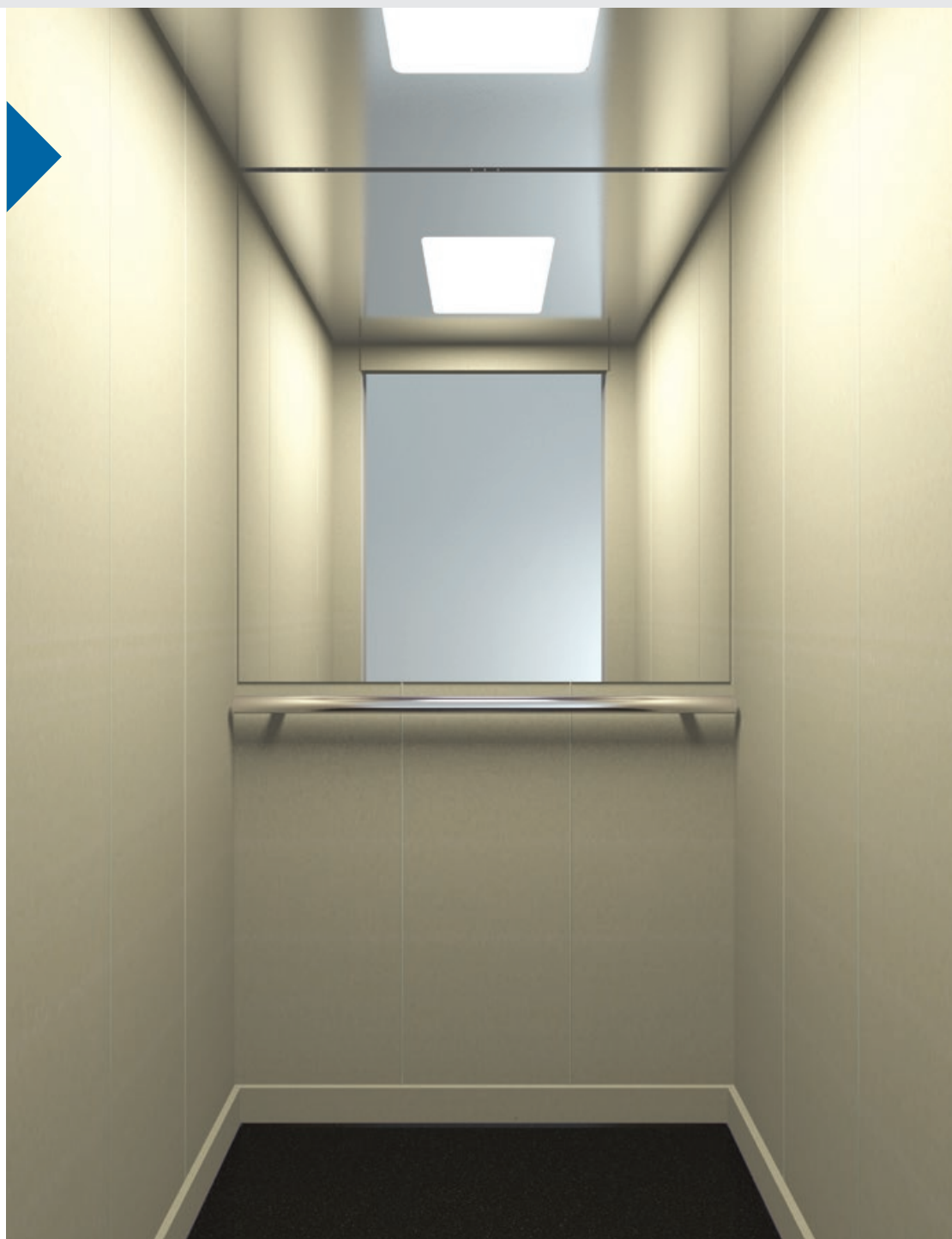
Pictures of the materials illustrate detailed part of each material and not its rendering on the cabin surface.



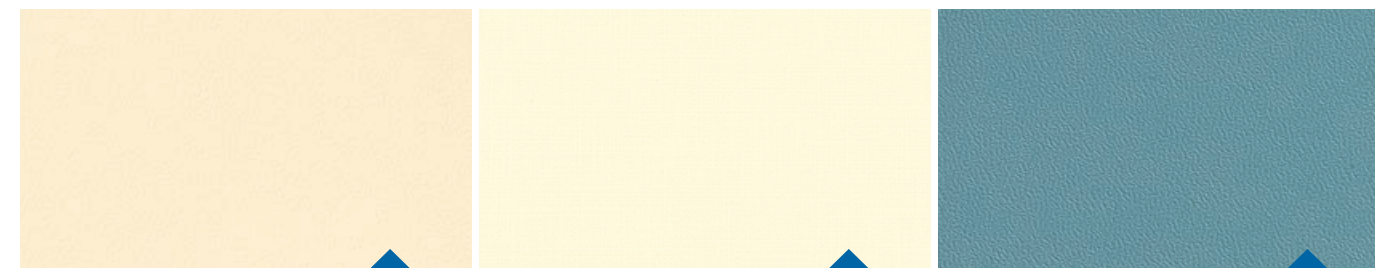
L320

Integrating simplicity and elegance, the L320 cabin is an excellent choice for a range of residential uses, home solution and offices. Offering modest, functional and contemporary design alongside a wide range of materials and possibilities, this cabin provides a versatile and flexible solution.

Wall A67 SMA
Floor Rubber 6801
Handrail K2
Ceiling O10



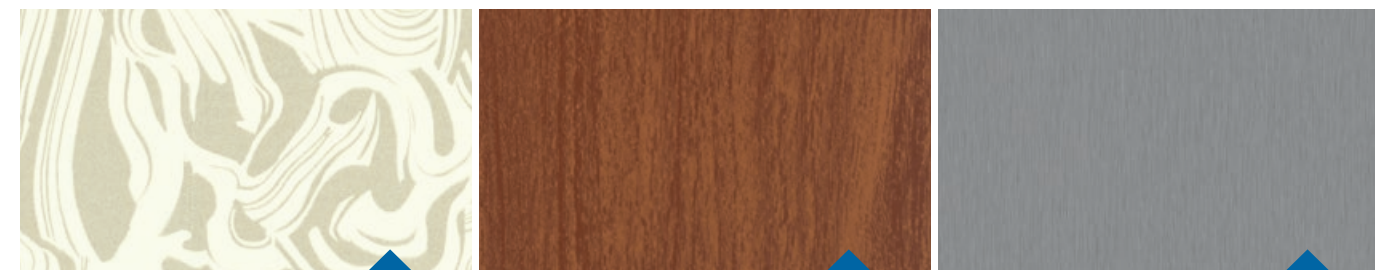
Walls Skinplate



A67 SMA

A90 GTA

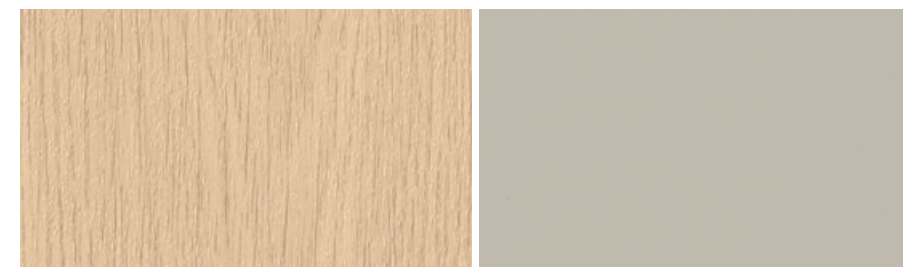
B13



PPS13

PPS93

F12PPS



DL86

N19SA



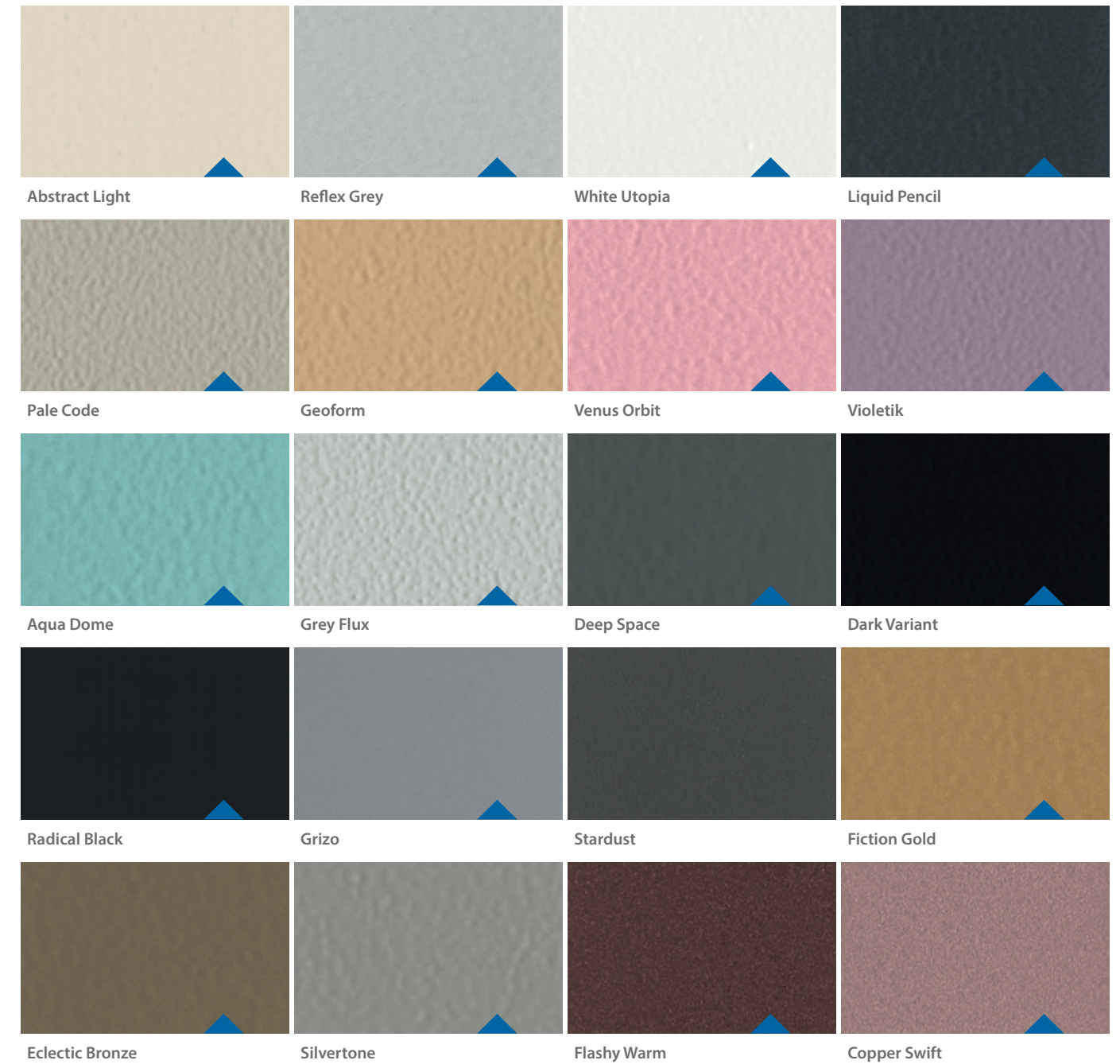
L330

The L330 is a cost-effective solution that offers a wide range of colors to create a passenger experience that complements the aesthetic of any residential, commercial and public building.

Wall Paint Pale Code
Floor Rubber 6801
Handrail K3
Ceiling O55



Walls Paint



Also available at
KLEEMANN Portal

Colors may differ slightly from those shown in the brochure, owing to the limitations of the printing process.

Pictures of the materials illustrate detailed part of each material and not its rendering on the cabin surface.



L510

Transform your building with an explosion of color and immerse your passengers in an uplifting and playful environment. Featuring glass walls to create a clean, fresh space, the L510 cabin is recommended for residential and commercial uses, hospitals and hotels.

Wall Glass B123 White
Floor Laminate 8630
Handrail K2
Ceiling O3



Walls Glass



Y8W Yellow

K16 Orange

R3W Red



B123 White

YB9W Green

B14W Blue



L530

Versatility and simplicity define the L530 cabin. Suitable for both commercial and residential uses, this cabin is ideal for luxury private residences, commercial buildings and offices. Choose from a multitude of materials and finishes, from sumptuous interiors of stainless steel, to sleek contemporary spaces, and create a truly unique space.

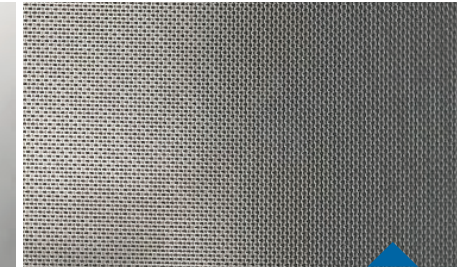
Wall Stainless Steel Satin
Floor Artificial Granite
Regal Black
Handrail K2
Ceiling O15



Walls Stainless Steel



Mirror



Linen



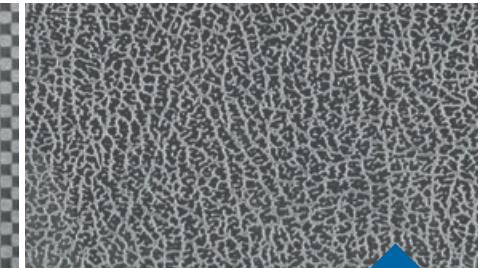
Gold Satin



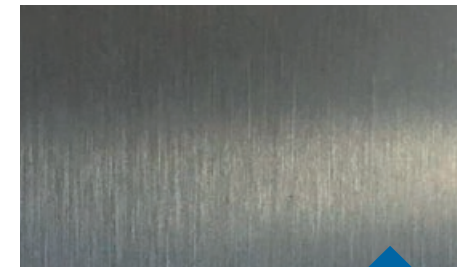
Gold Mirror



Checks



12LG



Satin

Also available at
[KLEEMANN Portal](#)

Colors may differ slightly from those shown in the brochure, owing to the limitations of the printing process.

Pictures of the materials illustrate detailed part of each material and not its rendering on the cabin surface.



T120

The exclusive design of the T120 cabin offers the passenger comfort and style. The design seamlessly fuses contemporary and futuristic elements to deliver a warm and inviting space, ideal for residential uses, home solutions and hotels.

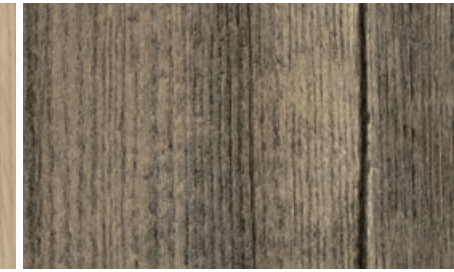
Wall Steel like Oceanic Blue
Floor Vinyl Cement Block
Ceiling O55



Walls Wood like



Smooth Sand



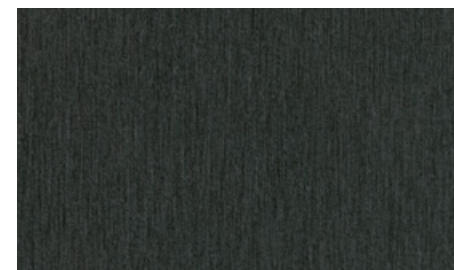
Hacienda Wood

Concrete like



Lime Light

Steel like



Oceanic Blue



T310

Featuring unique design that creates a feeling of space through inspiring, vivid colors and a curved ceiling and walls, the passenger experiences a sense of freedom during each and every ride. The spaciousness of this cabin makes it ideal for use in commercial buildings.

Wall Paint White Utopia
Floor Artificial Granite
Regal White
Handrail K2
Ceiling OLP1 Led Panel



Designed by
Andreas
Zapatinas

Walls Paint





T710

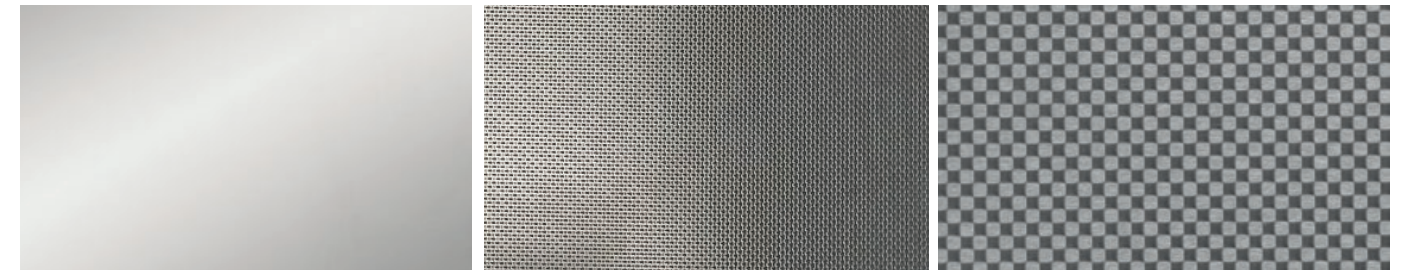
The T710 cabin fuses futuristic design with luxury to offer a truly exceptional passenger experience. The pioneering design, which features smooth lines and a curved ceiling and walls, welcomes the passenger to next-generation lift travel. The stylishly sleek cabin is the ideal choice for private residences, commercial buildings and hotels.

Wall Paint Geoform
Floor Laminate 8096
Handrail K2
Ceiling O7



Designed by
Andreas
Zapatinas

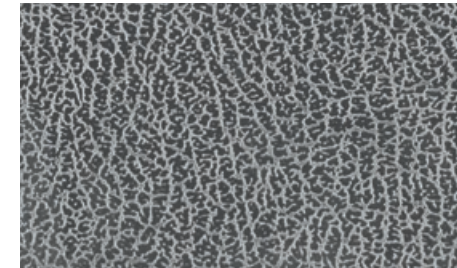
Walls Stainless Steel



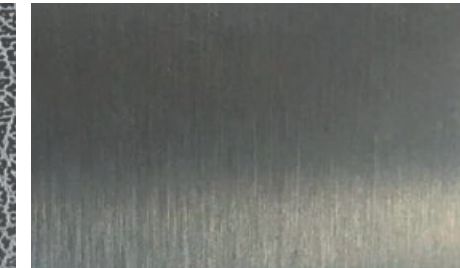
Mirror

Linen

Checks



12LG



Satin



Gold Satin

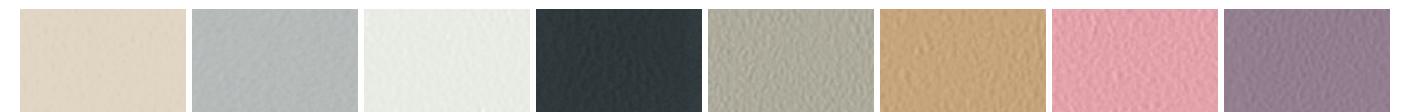


Gold Mirror

Colors may differ slightly from those shown in the brochure, owing to the limitations of the printing process.

Pictures of the materials illustrate detailed part of each material and not its rendering on the cabin surface.

Paint



Abstract Light

Reflex Grey

White Utopia

Liquid Pencil

Pale Code

Geoform

Venus Orbit

Violetik



Aqua Dome



Grey Flux



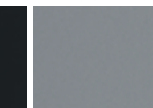
Deep Space



Dark Variant



Radical Black



Grizo



Stardust



Fiction Gold



Eclectic Bronze



Silvertone



Flashy Warm



Copper Swift

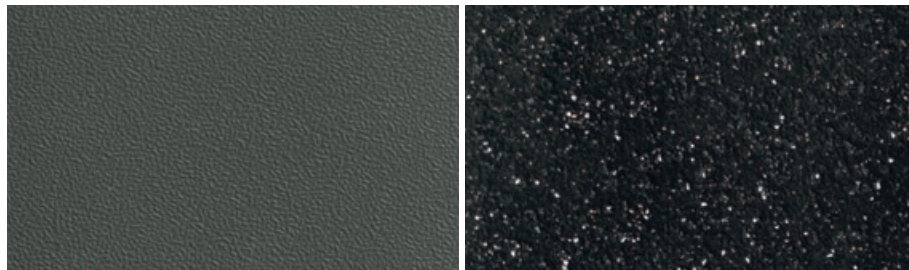


Range

Interior materials

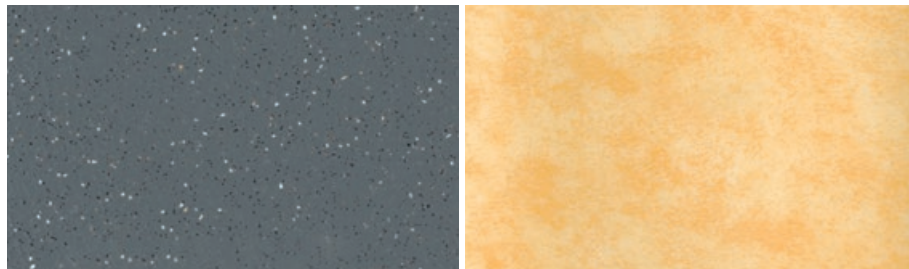
Floors

Rubbers



6727

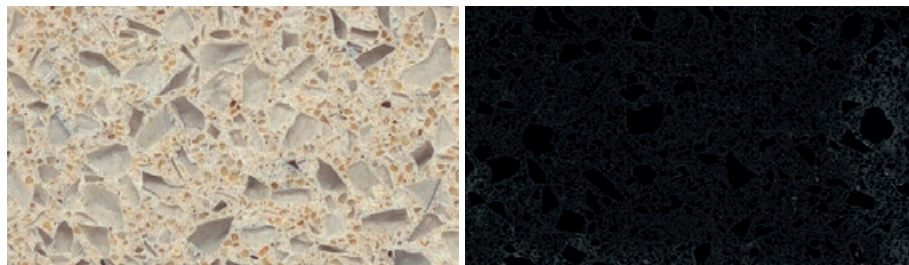
6801



6768

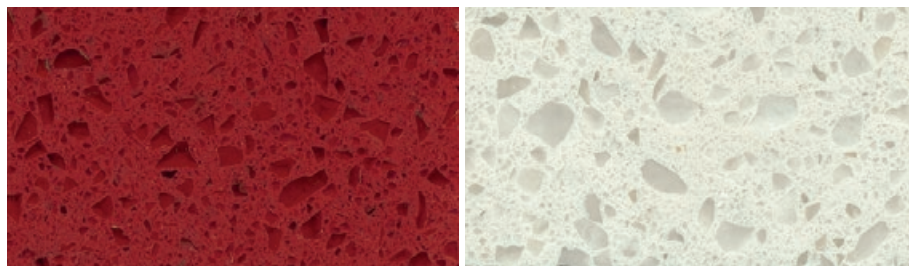
MX19101

Artificial Granites



Regal Beige

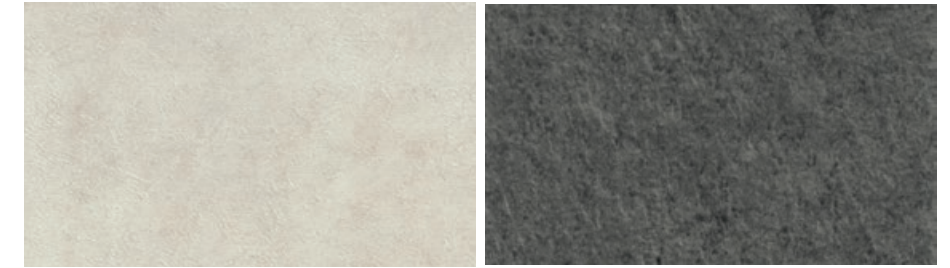
Regal Black



Regal Red

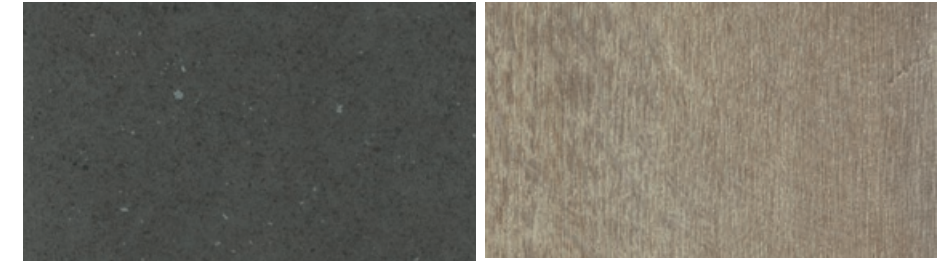
Regal White

Vinyl



Cement Block

Scivaro Grey



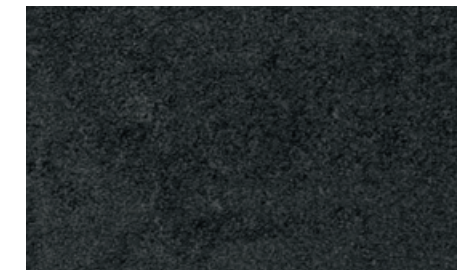
Dark Mineral

Oak Luxus



Mosaicon

Ceramic Tiles

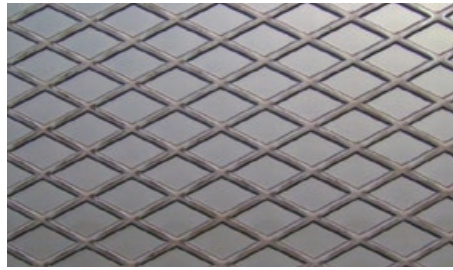


GP5 Nero

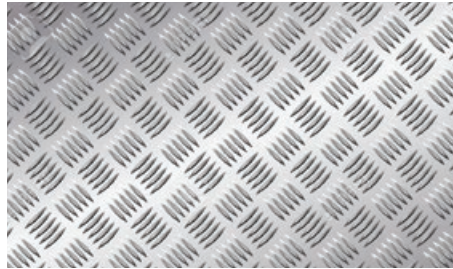
Colors may differ slightly from those shown in the brochure, owing to the limitations of the printing process.

Pictures of the materials illustrate detailed part of each material and not its rendering on the cabin surface.

Stainless Steel
Checkerplate



Aluminium
Checkerplate



Handrails



K2

AVAILABLE FINISHES

Mirror
Gold Satin



K3 According to EN81-70

AVAILABLE FINISHES

Mirror



K6

AVAILABLE FINISHES

Mirror

Ceilings

FINISHES

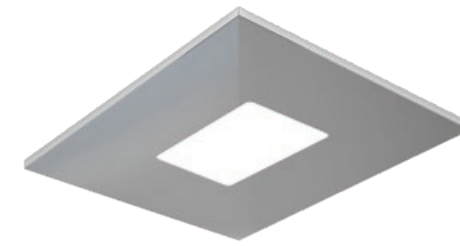
Satin
Mirror
Gold Mirror
Gold Satin
Paint



O3



O7



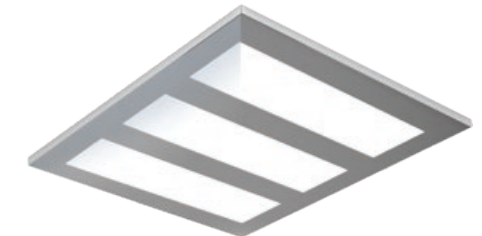
O10



O14



O15



O55



OLP1 (Led Panel)



Design options Doors



Automatic doors



Automatic
Big Vision

AVAILABLE FINISHES

Stainless steel
Skinplate



Automatic
Full Glass

AVAILABLE FINISHES

Stainless steel
Skinplate



Automatic
Full Inox

AVAILABLE FINISHES

Stainless steel
Skinplate
Paint

▶ Also available at
KLEEMANN Portal

Colors may differ slightly from those shown in the brochure, owing to the limitations of the printing process.

Pictures of the materials illustrate detailed part of each material and not its rendering on the cabin surface.



Semi-automatic doors



Classic



C310



C520



M310

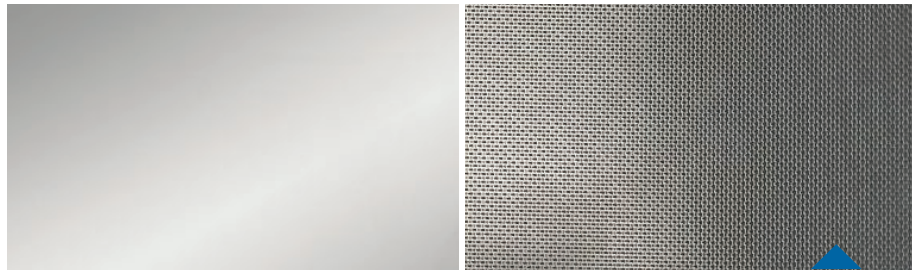


Blind

AVAILABLE FINISHES
FOR ALL SEMI-AUTOMATIC DOORS

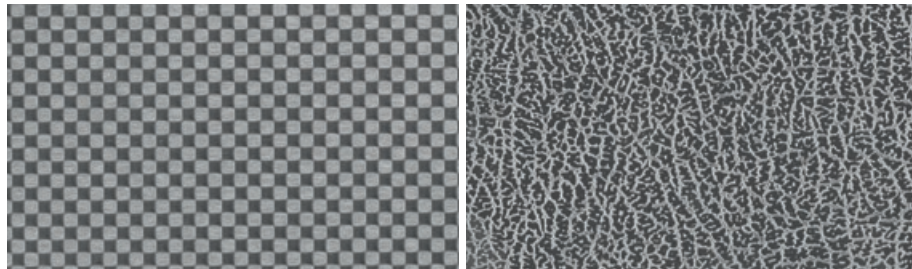
Stainless steel
Skinplate
Paint

Finishes Stainless Steel



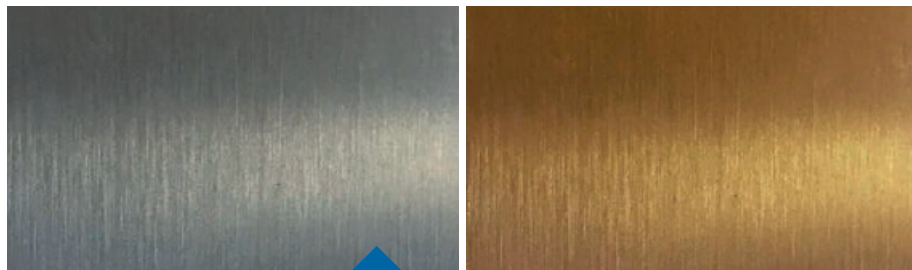
Mirror

Linen



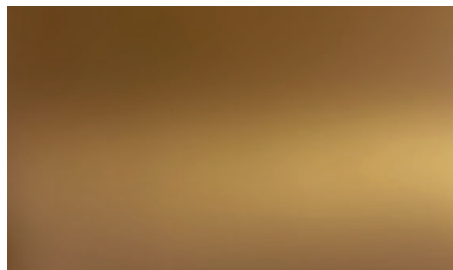
Checks

12LG



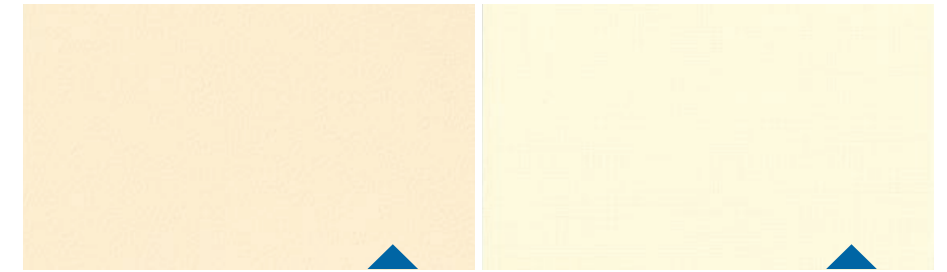
Satin

Gold Satin



Gold Mirror

Skinplate



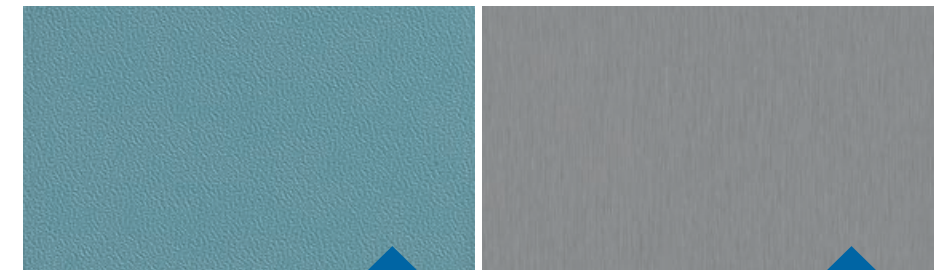
A67 SMA

A90 GTA



PPS13

PPS93



B13

F12PPS

Paint



Abstract Light

Reflex Grey

White Utopia

Liquid Pencil

Pale Code



Geoform

Venus Orbit

Violetik

Aqua Dome

Grey Flux



Deep Space

Dark Variant

Radical Black

Grizo

Stardust



Fiction Gold

Eclectic Bronze

Silvertone

Flashy Warm

Copper Swift



Design options Operating panels



Flush Mounted



Landing Indicator

P95-902 DIMENSIONS
(W) 230 mm x (D) 20 mm x (H) 92 mm



Car Operating Panel

AKC BES DIMENSIONS
(W) 200 mm x (H) 2000 mm



Landing Operating Panel

AKL DIMENSIONS
(W) 85 mm x (H) 265 mm

▶ Also available at
KLEEMANN Portal

Colors may differ slightly from those shown in the brochure, owing to the limitations of the printing process.

Pictures of the materials illustrate detailed part of each material and not its rendering on the cabin surface.

Characteristics

- Available also with Dot Matrix display
- Compatible also with buttons B37R, MT-42, RT-42. Antibacterial and touchless buttons are also available
- Stainless steel finishing as standard (special upon request)
- Engrave in LOP as option



Surface Mounted



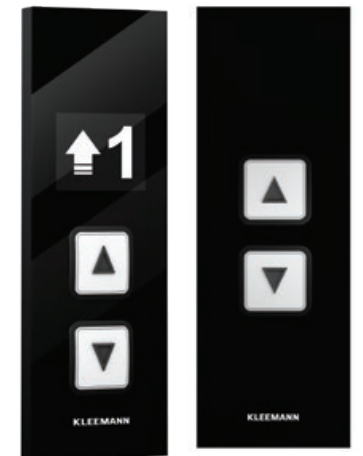
Landing Indicator

GN-SH301 DIMENSIONS
(W) 250 mm x (D) 22 mm (H) 87 mm



Car Operating Panel

GN-SC300 DIMENSIONS
(W) 200 mm x (D) 24 mm (H) 1000 mm



Landing Operating Panel

GN-SL300 DIMENSIONS
(W) 87 mm x (D) 22 mm (H) 250 mm

Characteristics

- Available also with Dot Matrix display
- Compatible also with buttons B37R
- Black plexiglass finishing



Surface Mounted



Landing Indicator

FTHL SLIM DIMENSIONS
(W) 230 mm x (D) 10 mm x (H) 108 mm



Car Operating Panel

DKC DIMENSIONS
(W) 200 mm x (D) 24 mm (H) 1000 mm



Landing Operating Panel

FTL INOX SLIM DIMENSIONS
(W) 108 mm x (D) 10 mm x (H) 230 mm

▶ Also available at
KLEEMANN Portal

Colors may differ slightly from those shown in the brochure, owing to the limitations of the printing process.

Pictures of the materials illustrate detailed part of each material and not its rendering on the cabin surface.

Characteristics

- Available also with TFT display
- Compatible also with buttons B37R
- Black plexiglass finishing



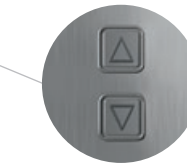
Door Frame



Door frame solution with no display



Door Frame AKL001



Door Frame AKL002



Door frame solution with display



Door Frame AKL101



Door Frame AKL102

▶ Also available at
KLEEMANN Portal

Colors may differ slightly from those shown in the brochure, owing to the limitations of the printing process.

Pictures of the materials illustrate detailed part of each material and not its rendering on the cabin surface.



Buttons



B37Q
according to EN81-70

DIMENSIONS
(W) 37 mm x (H) 37 mm



MT42

DIMENSIONS
(W) 39 mm x (Y) 39 mm



MT42
according to EN81-70

DIMENSIONS
(W) 39 mm x (Y) 39 mm



B37R
according to EN81-70

DIMENSIONS
ø 30 mm



RT42

DIMENSIONS
ø 30 mm



RT42
according to EN81-70

DIMENSIONS
ø 30 mm

Also available at
KLEEMANN Portal

Colors may differ slightly from those shown in the brochure, owing to the limitations of the printing process.

Pictures of the materials illustrate detailed part of each material and not its rendering on the cabin surface.

Hygiene Line Solutions



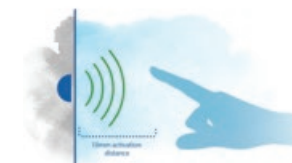
COMPATIBLE ONLY

with AKC BES Car Operating Panels and AKL Landing Operating Panels



Touchless buttons

An 100% antibacterial solution that operates by infrared induction which detects the call's activation.



Anti-Bacterial buttons

Blue Line KLH-42R buttons with nano-silver coating, that can provide antibacterial and antifungal protection.





Custom
Solutions

Custom solutions
Panoramic cabins



Panoramic Cabins

Elevating the architectural style of any building by upgrading interior or exterior views. KLEEMANN fully customizable panoramic cabins are the ideal solution for hotels, shopping malls, office buildings and other active public spaces.



Curved Panoramic



Mushroom Panoramic



Polygonal Panoramic



Round Panoramic



Square Panoramic



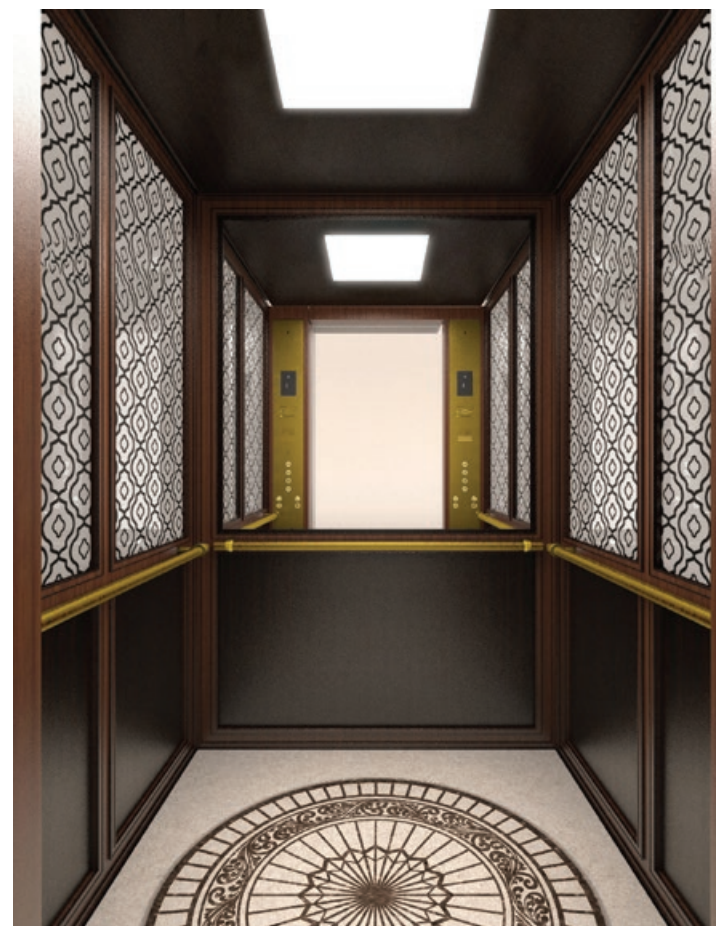
Customized Design Expertise

KLEEMANN enjoys a favorable worldwide reputation for its customized design expertise. With a wealth of experience gained from demanding projects, KLEEMANN excels in tailor-made solutions for unique requirements.

Alongside a diverse range of standardized cabins, KLEEMANN provides reliable, efficient, precise, and cost-effective responses to any specifications.

At KLEEMANN, a dedicated Design Team serves as the driving force behind the development of custom cabins for even the most challenging projects.

Our expert and creative designers, deliver innovative and tailor-made solutions that meet the unique requirements of each project, aiming to superior customer support and satisfaction, from initial inspiration to installation.





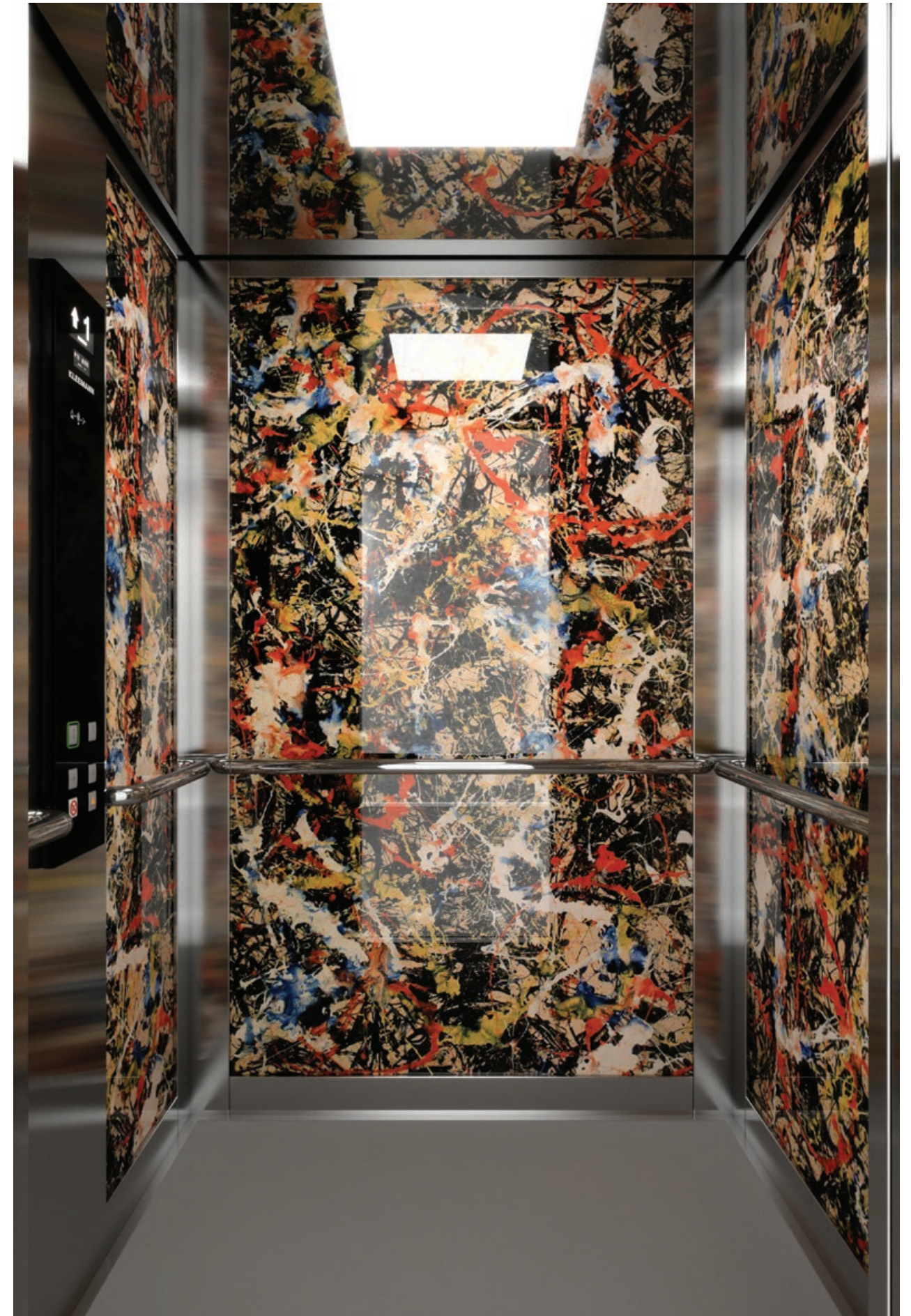
KLEEMANN Design Package

The KLEEMANN design service package is a three-part process that promotes creative communication among all project stakeholders, allowing exploration of new design ideas, products, and materials to enhance overall performance and quality standards.



Real Project

- Analyzing and understanding the technical and aesthetic requirements of the project.
- Providing architectural collaboration and guidance in designing cabins, doors, operating panels and tiling of the lift.
- Creating customized proposals through 3D photorealistic renderings, to ensure that the final design meets the client's expectations



3D Rendering

KLEEMANN has a worldwide presence in over 100 countries with local presence in key market points. It stands out for its product range, high quality and control standards, world class design and for its expertise in custom made solutions. Constantly monitoring the global market trends, the company continues to innovate, grow, develop, and improve while consistently remaining in tune with its global character.



KLEEMANN
Your 1st Choice in Lifts

KLEEMANN HELLAS SA
Kilkis Industrial Area
P.O. BOX 25, Kilkis, 611 00 - Greece
G.E.M.I. 14486435000

Colors may differ slightly from those shown in the brochure, owing to the limitations of the printing process. Pictures of the materials illustrate detailed part of each material and not its rendering on the cabin surface.

While every effort has been made to ensure information accuracy, KLEEMANN bears no responsibility for typographic errors or omissions.