

**viccarbe**

# Web Paper

*Spring Season*



Following the warm reception of the first edition, we are happy to bring a new issue of our Web Paper, our most interactive and spontaneous catalogue. A journey around our website in printed format, designed consciously for you so you can instantly discover everything we are and what we stand for in the design industry.

If you seek more information, we recommend to visit our website and our Professional Area as it holds everything you may need. A dynamic virtual space that is open 24/7 and updated daily to offer the best user experience to work comfortably with us.

Welcome to the place where everything happens. *Welcome to*

*viccarbe.com*



On each page of this catalogue you will find a QR code. We invite you to scan them to continue to enjoy the latest content and novelties in our collaborative collections.



# INDEX

## Product Overview

- Aleta pg. 04
- Aleta Stool pg. 06
- Copa pg. 08
- Copa Stool pg. 10
- Burin pg. 12
- Maarten pg. 16
- Maarten Stool pg. 18
- Sistema pg. 20
- Common pg. 24
- Season Chair pg. 26
- Season Sofa pg. 27
- Season Pouf pg. 28
- Season Bench pg. 29
- Savina pg. 32
- Trestle pg. 34
- Noha pg. 42
- Foro pg. 48
- Aleta Executive pg. 52
- Fuste pg. 56
- Zoco pg. 58
- Trivio pg. 60
- Cambio pg. 64
- Levitt pg. 66
- Step pg. 67
- Funda pg. 68
- Funda Bold pg. 70
- Colubi pg. 71
- Aleta Lounge pg. 72
- Ace pg. 73
- Step Lounge pg. 74

# 04



Aleta

# 08



Copa

# 12



Burin

# 32



Savina

Savina Lounge	pg. 75
Sistema Lounge	pg. 78
Copa Lounge	pg. 79
Penta	pg. 80
Fedele	pg. 81
Brix	pg. 82
Nagi	pg. 83
Maarten Lounge	pg. 84
Wrapp	pg. 85
Quadra	pg. 86
Ears	pg. 87
Klip	pg. 88
Maarten Table	pg. 90
Stan	pg. 91
Solar	pg. 92
Last Minute	pg. 93
Torii	pg. 94
Trestle Bench	pg. 95
Sistema Bench	pg. 96
Accessories	pg. 97
The Collaborative Outdoor	pg. 98
Low tables	pg. 102

## Other contents

Connectivity and flexibility	pg. 30
Timeless designs for every project	pg. 36
Around the world	pg. 38
The collection	pg. 58
Professional area	pg. 76
Our designers	pg. 100
Vicarbe 3D Awards	pg. 108
Configurator	pg. 109
Vicarbe HQ Virtual Tour	pg. 110
Sustainability   Quality & Warranty	pg. 111

# 34



Trestle



Around the world

# 38

# 52



Aleta Executive



Noha

# 42

2017

# Aleta

Designed by Jaime Hayon

In 2017, the Aleta collection saw the light, combining the organic and friendly shapes of the artist-designer Jaime Hayon with the comfort and warmth provided by our Mediterranean influence. Today, Aleta is one of our great icons. A best-seller with endless possibilities that matches every scenario and is an essential piece of international projects, helping to transform spaces and connect users.

The broad collection includes a chair and a lounge chair available in executive and standard versions, a stool and a low table. With different bases in wood or metal, casters or swivel, practical armrests and the possibility of being upholstered in any of our graded-in fabrics.



# The soft curve of Aleta's backrest reflects Hayon's eclectic personality that fuses art and design



Aleta wooden base and Trestle table.



Aleta pyramid swivel base and Fuste table.



Aleta metal base and Maarten table.



2017

# Aleta Stool

Designed by Jaime Hayon

Aleta stool metal base and armrests.



Aleta stool swivel base.



# A fun and spontaneous design by Jaime Hayon with an iconic silhouette to lift every space

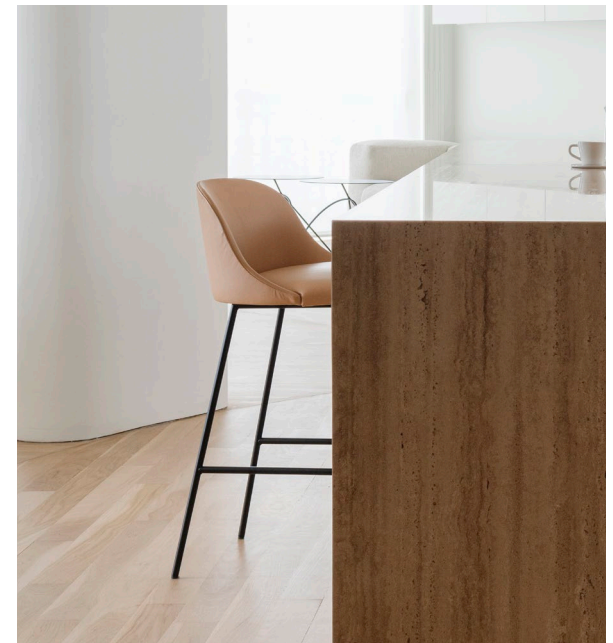


Aleta stool metal base.



The iconic silhouette designed by Jaime Hayon, materializing the movement of shark fins gliding through water, is present in each of the pieces that make up the Aleta collection. The stool is that fun and spontaneous design that helps to add a touch of relaxed sophistication to bars, restaurants, casual meeting areas and hospitality environments. Available with two backrests, two heights —bar and counter— and two bases —swivel and fixed— the Aleta stool looks great in every scenario. A sleek contemporary design that enhances conversation, making the time fly by.

Aleta stool metal base.



2019

# Copa

Designed by Ramos & Bassols

Copa chairs on casters and Trestle table.



# It is all about extraordinary comfort with Copa



Left to right: Copa Soft chairs pyramid swivel and cantilever base, stool in swivel base and Copa Soft chair wooden base.

Copa joined our collaborative collection to represent the ultimate version of comfort. Its innovative extra wide seat and friendly shapes are ideal for office environments and especially comfortable for homes or spaces dedicated to hospitality. Its silhouette, inspired by the shape of an elegant crystal glass, encapsulates a perfectly balanced collection to remain seated for hours. Available as a chair, lounge chair and stool, with different bases, regular or soft seats for extra comfort and multiple finishes to create the design that best suits your spatial requirements.

Copa chair swivel base with Cambio table.



2019

# Copa Stool

Designed by Ramos & Bassols

Copa stool wooden base and Burin table.



Copa stool swivel base.



The Copa stool remains as comfortable and versatile as the other designs in the Copa collection. Its elegant aesthetics and its wide seat, available in soft and standard version, make it ideal for corporate canteens, promoting flexible work in workplaces and great to encourage conversation in bar areas. A sophisticated design to achieve balanced interiors.

# Copa stool or how to encourage conversation in flexible workplaces, bars and canteens



Copa stool metal base and Trestle table.



Copa stool metal base.



2018

# Burin

Designed by Patricia Urquiola

Burin double base with Copa Soft chair wooden base.



Designed by Urquiola, Burin's silhouette plays tribute to the traditional wood carving tools. With Burin, you can combine different finishes, heights and dimensions to shape the ideal table, available for indoor and outdoor spaces. In restaurants, choose Burin with single and double bases. In meeting rooms and presidential offices, choose triple. In living rooms, single and perhaps double. And a bonus: convenient integrated electrification options can be added, helping to gain agility and stay connected for as long as required. A sculptural yet very practical design table for working and living.



☺ This collection allows for electrifications. Check page 30.

# Functionality, shape and character for any collaborative environment



Scan for more

Burin double base with Aleta chair.



Burin Outdoor and Maarten sled base.





Burin double base with electrifications and Copa Soft chairs wooden base.



2012

# Maarten

Designed by Victor Carrasco

Maarten chair on casters and armrests and Maarten table on casters.



Maarten sled base and writing tablet.



With Maarten, we placed people who would enjoyed design and comfort at the very center of the equation. Maarten chair's story is one of contained minimalism: surprisingly synthetic in its silhouette but extraordinarily welcoming in its soft version. A very defined structure and a seat that is pleasant to the touch as to the sight, inviting you to remain seated for hours, and that—depending on the base and finish you choose—is capable of immersing you in the intimacy of a residential space, in the versatility of an installation or in the comfort that projects dedicated to hospitality seek. Polypropylene version available, an all-rounder for educational and contract projects due to its excellent quality-price ratio.

# Surprisingly synthetic in its silhouette but extraordinarily welcoming

Left to right: pyramid swivel on casters and arms, wooden swivel, wooden base, pyramid swivel, wooden swivel lounge and arms, stackable stool sled base.

Maarten wooden swivel base.



Scan for more

2012

# Maarten Stool

Designed by Victor Carrasco

Stackable Maarten stool and chair sled base.



The Maarten stool was created to provide designers with a comfortable and effortless piece with practicality, comfort and longevity in mind. Choose Maarten when looking for an iconic upholstered stool to upgrade the bar game or when seeking the perfect stackable design to stand the test of time. The smooth outlines of its silhouette embrace the back properly, achieving great comfort. A versatile stool collection with a remarkable aesthetic to bring character into any room.

Maarten stool swivel base and Maarten chair sled base.



# A versatile collection with a remarkable aesthetic to bring character and comfort to the scene



Maarten stool sled base.



Maarten stool swivel base.



2016

# Sistema

Designed by Lievore Altherr Molina



# A modular seating collection with endless options and connectivity to transform spaces



Sistema Legs sofa and lounge chair with upholstered armrests and Maarten low table.



Sistema Floor sofa with upholstered armrests and Trino low table.



In the form of a sofa, bench, or a lounge chair and with the possibility of being as modular as the user requires, the Sistema modular seating range adapts to the specific needs of each space: without stridency and with the exact dose of personality that converses with everyone who sits on it. Its different modules can combine with each other, helping to achieve more balanced spaces.

The sofa brings two versions: Floor and Legs. Sistema Legs can include a free-standing auxiliary table, designed by our creative team to promote new behaviours in hybrid spaces. Far from rigid workstations, this table allows users to perform from more comfortable locations: a quick coffee in the office, taking notes in informal meetings, or supporting the laptop whilst teleworking.

☺ *This collection allows for electrifications. Check page 30.*



Sistema Legs sofa, Funda Bold lounge chairs and Serra low table.



2013

# Common

Designed by Naoto Fukasawa

As it usually happens with Naoto Fukasawa's design, the Common bench has managed to transform the object's surrounding into a friendlier place. Through its different modules and measurements, Common has been able to maintain a constant theme, with a silhouette as resounding as it is curved. It is a magnet to make people come together and the perfect gathering point to promote soft collaboration in highly technological and fast paced environments. The versatile bench can include practical and discreet electrification options, a must to improve productivity and efficiency at the workspace and further.



# A magnet to make people come together, the perfect gathering spot for soft collaboration



Common bench, different modules.



Common bench.



Common bench, two modules.



2015

# Season Chair

Designed by Piero Lissoni



Scan for more

Season chairs with hidden casters and Maarten table.



Everyone who sits on a Season chair is pleasantly surprised. Perhaps due to its hidden casters, that enable full movement that rise our inner child. Maybe it is its comfortable silhouette, embracing the back and allowing warm after-dinner conversations for as long as the body can stand. And there is more, its practical technical fabric located at foot height adds strength and durability to the design.

Season chairs with hidden casters.



# Season Sofa

Designed by Piero Lissoni

From Piero Lissoni we learnt to simplify shapes and to relax the concept, revindicating Mediterranean creativity with pieces in which comfort is accompanied by surprising and unexpected details. The play between volumes is constant in the versatile Season sofa collection, with three different sofa modules available that enable fun compositions to shape welcome areas, restaurants, collaborative zones, halls and staff break rooms. The result is a game of geometry with fair proportions, surprising comfort, enduring versatility and a heartening human approach.

Season sofa with electrification and Burin Mini.



Scan for more

Season sofa, Cambio and Serra low table.



☺ This collection allows for electrifications. Check page 30.

2014

# Season Pouf

Designed by Piero Lissoni

Season represents the balance between simplicity and a carefully thought design. A collection of friendly poufs with a fun design and great durability for high-traffic areas, thought to bring new ways of interaction and soft collaboration in the office. The poufs work as an additional seating solution thanks to its optional hidden casters, its multiple electrification options and the endless finishes available, making them suitable for environments where agility and dynamism prevail. As a true game of geometric shapes, the collection covers all the needs that may arise in intermediate spaces, workplaces and, of course, collaborative areas.

Strap produced in high-resistance technical fabric.



Scan for more

Season Pouf and Stan table.



☺ This collection allows for electrifications. Check page 30.

# Season Bench

Designed by Piero Lissoni



Season bench and Penta lounge chair.



With the Season bench, designer Piero Lissoni was able to evoke the posture of a relaxed person as elegantly as possible. Simulating a sculptural and emphatic piece, its force gives the user all the freedom of a bench that does not impose, but suggests. It was born in its day as a novel product category that –thanks to the upholstery and its sinuous silhouette– would bring greater warmth and kindness to contract projects. Its streamlined proportions, connectivity options, singular shape and two heights allowing different seating positions, make Season a very valuable design element.

☺ *This collection allows for electrifications. Check page 30.*



Scan for more

# CONNECTIVITY & FLEXIBILITY

Our designs are a meeting point for comfortable working, the place to initiate conversations, exchange ideas, collaborate and carry out focus work. This is why many of our lounge chairs, sofas, poufs, benches, tables and low table collections can integrate practical and discreet connectivity solutions, allowing to charge electronic devices easily and whenever you require, avoiding interruptions and keeping creativity running.

1. Integrated USB powerbox or socket



2. Cone powerbox



3. Under seat powerbox



4. Portable table with USB port



5. Integrated USB port



1, 2, 3, 4 & 5 are available for upholstered products (lounge chairs, benches and sofas).  
6, 7, 8, 9, 10, 11 & 12 are available for non-upholstered products (tables and low tables).

# Practical and discreet connectivity solutions to keep creativity running

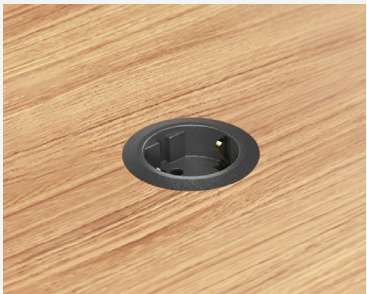
6. USB port with battery for in & out



7. Powerbox under tabletop



8. Integrated socket



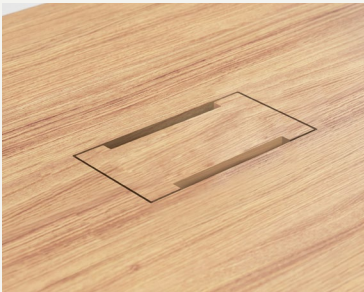
9. Integrated USB port



10. Powerbox



11. Hidden powerbox set



12. Pop-up sockets



To increase comfort whilst working from any of our tables, we have included specific connectivity solutions for your needs for indoor and outdoor spaces, so you only have to take care of bringing out the brilliant ideas and we can sort out the rest.

2022

# Savina

Designed by Victor Carrasco

Savina joined our collection to enhance soft collaboration. A pleasant cloud sofa that presents a new universe of comfortable working and lounging solutions for every hybrid space. Due to its soothing silhouette and its multiple compositions, we like to call it an island of collaboration, a reassuring spot to gather, work and retreat.

The collection includes a lounge chair, a chaise longue and a sofa, all available in multiple compositions and finishes. With discreet electrification applications and optional hidden casters, helping to gain agility and facilitate its transport whenever it needs to be moved around or relocated.



# The soft shapes in Savina and its timeless appeal create a secure space for conversation



Savina with different modules, including chaise longue.



Below: Savina with Maarten low table. Right: Savina on casters.



⌚ This collection allows for electrifications. Check page 30.

2014

# Trestle

Designed by John Pawson



# Trestle is the natural meeting point between the different characters that inhabit a space



In 2014, English designer John Pawson translated his inherent minimalism to the exquisite Trestle collection of tables with matching benches. A minimalist and natural meeting point that eases the path to follow and gives meaning to interior design projects.

The craftsmanship behind Trestle's production process uses the best noble materials, such as wood from controlled timber sources, which convey warmth and richness to its minimal design. The table collection can include practical and discreet electrification options, following an innovative mechanism that hides cables through the leg, leaving everything tidy.



☺ *This collection allows for electrifications. Check page 30.*

SPRING SEASON

Trestle table, Maarten chair wooden swivel base and Season chair and pouf.



Trestle table and Quadra chair.



# TIMELESS DESIGNS FOR EVERY PROJECT



## Office

*Corporate interiors, hybrid workplaces, and collaborative offices that put people and their wellbeing at the center.*



## Retail

*Commercial interiors, showrooms and flagship stores where comfort and design are key.*

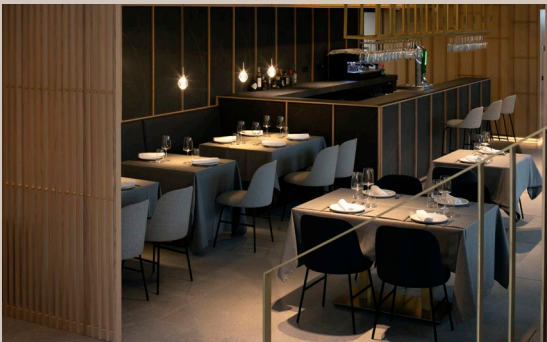


## Hospitality

*Uplifting hotels, resorts and well-being centers to relax and unwind, no matter the location.*

## Bars & Restaurants

*Upgrading the dining experience in culinary gems around the world.*



Our collaborative designs are chosen by the world's top interior designers and architects, to help them transform spaces into inspiring hubs that foster collaboration. We are part of renowned international corporations such as Apple, Google, Orange, Dior, IBM, Hyundai, Microsoft, Spaces, Godiva or the Warner Bros Studios, to name a few.

The versatility of our collections is endless. Depending on the chosen finishes, our designs adapt to every indoor and outdoor scenario, adding a warm feeling to the atmosphere.



## Residential

*Inspirational homes with a contemporary allure to celebrate, live and grow.*



## Outdoor

*Inviting exterior spaces seeking to harness its potential and use it frequently as a more open and natural extension of the interior.*

## Healthcare

*Healthcare and senior living projects that trust in design to improve the lifestyle of our beloved ones.*



## Educational

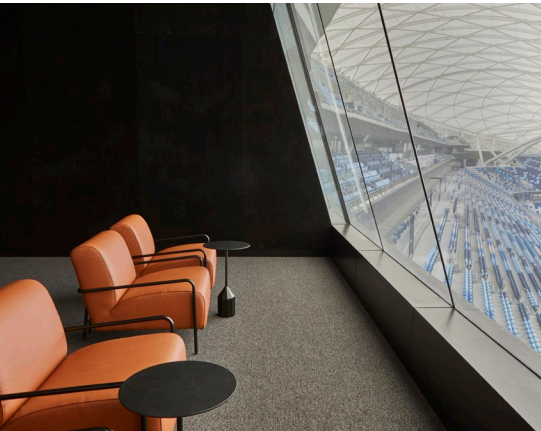
*Active learning educational centers to shape the talents of tomorrow.*



Scan for more

# AROUND THE WORLD

Office — Hospitality — Bars & Restaurants — Retail — Residential — Healthcare — Outdoor — Educational



**ALLIANZ STADIUM, SYDNEY (AUSTRALIA)**

*Colubi and Burin mini*  
Lounge area



**FARMACIAS DEL AHORRO, (MEXICO)**

*Aleta*  
Bar area



**VOCON OFFICES, OHIO (USA)**

*Aleta*  
Meeting space



**ICS SCHOOL, MILAN (ITALY)**

*Klip stool*  
School canteen



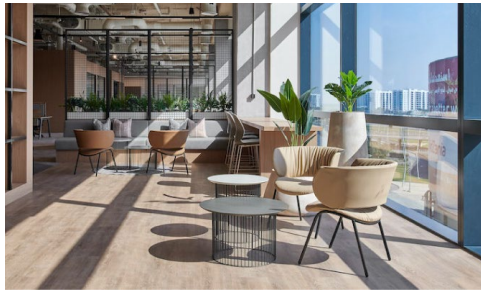
**MICROSOFT OFFICE, HAMBURG (GERMANY)**

*Colubi*  
Reception



**ARGENTA BANK, ANTWERP (BELGIUM)**

*Aleta lounge*  
Lobby



**ALDAR PROPERTIES, ABU DHABI (UAE)**

*Funda*  
Lobby



**GABRIEL HQ, MADRID (SPAIN)**

*Aleta*  
Meeting room





**PRIVATE HOME, BRUGES (BELGIUM)**

*Funda Bold and ottoman*  
Living room



**KANAGAWA UNIVERSITY, KANAGAWA (JAPAN)**

*Common bench and low table*  
Lounge area



**THE HYUNDAI, DAEGU (SOUTH KOREA)**

*Aleta*  
Lounge space

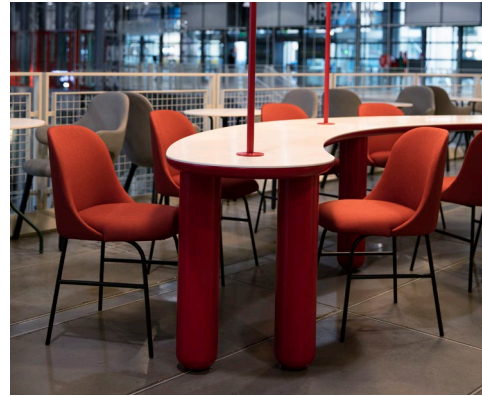
**LIFE SCIENCE CENTER, ESPOO (FINLAND)**

*Common and Burin Mini*  
Reception



**UCLA, LOS ANGELES (USA)**

*Sistema Legs and Nagi*  
Lounge area



**CENTRE POMPIDOU, PARIS (FRANCE)**

*Aleta*  
Bar Area



**SEPTIEMBRE CLINIC, VALENCIA (SPAIN)**

*Maarten*  
Meeting room



**MOËT HENNESSY HQ, DUBAI (UAE)**

*Last Minute*  
Bar area



Scan for more

01 NOHA

02 FORO

03 ALETA EXECUTIVE

04 FUSTE

05 ZOCO

06 TRIVIO





# NOVELTIES

2023

# Noha

Designed by Ludovica Serafini + Roberto Palomba

Noha is a simple gesture, a pillow folded in the act of providing a comfortable seat, highly versatile, perfectly fitting into both workspaces and beyond. Our broadest and most ambitious range up to date, designed to create inviting and inspiring corporate environments. It is a collection aimed at bringing the pleasure of living into the office, so that this space can achieve the levels of hospitality, kindness, and refinement found in a domestic environment. Hence, a simple gesture that also becomes a technical object while maintaining softness, vision, and the sense of warmth that we find in residential settings.



Left to right: Noha Executive swivel wood base, Noha chair flat swivel base, Executive on casters, chair with metal base and armrests and flat swivel base and armrests.

# Designed to bring the pleasure of living into the office and beyond



Noha chair with wooden base and Cambio table.



Noha Executive and Cambio table triple base.



Noha Executive lounge chair and Trino low table.





Noha Executive with casters and Cambio table.



DESIGN STORIES

# Ludovica Serafini + Roberto Palomba

Since the beginning of our relationship with Italian architects Ludovica Serafini + Roberto Palomba, they have always helped us reflect on the importance of balance. Balance between designing sophisticated silhouettes with comfort and functionality as key features. We both share a deep commitment to creating friendly shapes with the highest quality materials to approach well-being in the most holistic way. Expanding collections within a successful collaboration that started with the Levitt range in 2007 is like adding more words to a common language. The Noha collection arrives with force, with the soul of a true and timeless icon. Take a seat and discover everything about the range.

# Q&A...





*Where did the inspiration for Noha arise?*

**Roberto Palomba:** Noha is a simple gesture, a pillow folded in the act of providing a comfortable seat, highly versatile, perfectly fitting into both workspaces and beyond.

**Ludovica Serafini:** It is a project aimed at bringing the pleasure of living into the office, so that this space can achieve the levels of hospitality, kindness, and refinement found in a domestic environment. Hence, a simple gesture that also becomes a technical object while maintaining softness, vision, and the sense of warmth that we find in domestic settings.

*How does the collection promote collaboration?*

**Palomba + Serafini:** Expanding collections within a successful collaboration is like adding more words to a common language. It is not only a way to continue on a path of success but also to explore new perspectives and visions. It's like adding new nuances and meanings to an ongoing story, making it richer and more complete.

*Does the word "Noha" have a meaning? Where does its name originate?*

**Palomba:** The name comes from a cute thing that happens in our studio every day. We adopted a little dog who practically lives by moving from one chair to another in our office, greeting our team every day. In a way, she tries out all the seats in our studio. Her name is Noha. This is where the name of the collection comes from.

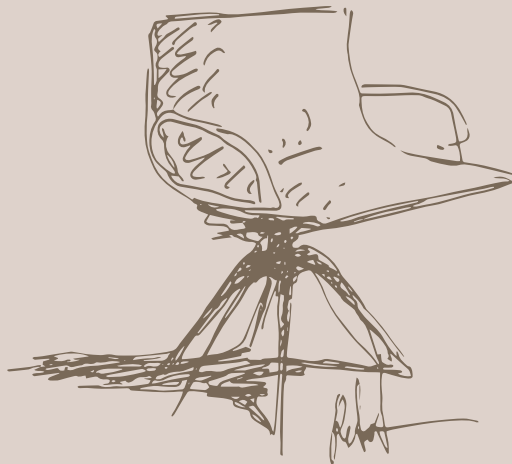
*What do you want to achieve with Noha's design?*

**Serafini:** With Noha, we certainly want to bring an idea of affectionate simplicity using domestic elements into the world of the workplace and collaborative scenes.

*Three words to describe the Noha collection.*

**Palomba:** Simple. Linear. Complex.

**Serafini:** Welcoming. Soft. Sexy.



First sketch of Noha chair by Roberto Palomba

2022

# Foro

Designed by John Pawson

Easy wire management system through Foro's leg.



# A table made for conversation, idea exchange, and collaborating



Foro table with powerbox and Aleta chairs on pyramid swivel base.



Dominated by a clear minimalist aesthetic, Foro is a solid oak wood table brought by designer John Pawson to convey warmth, dimension and durability to any working or living environment. The table collection can include discreet electrification options with special wire management through one of its legs and is available in different sizes and oak finishes. A collaborative table concept made in Spain and designed to encourage comfortable gatherings, conversations, and celebrations.

☺ *This collection allows for electrifications. Check page 30.*

Foro table and Funda chairs.





Foro table with Maarten chair.



2023

# Aleta Executive

Designed by Jaime Hayon

With great taste, Aleta Executive was introduced to our iconic Aleta collection in collaboration with artist-designer Jaime Hayon, with the clear purpose of transforming corporate spaces into sophisticated atmospheres to grow and feel inspired. Available as a chair and a lounge chair, Aleta Executive offers multiple finishes and bases, and the possibility of having the outside of the backrest in wood, a premium finish that confers sophistication which is ideal for presidential offices, meeting rooms, training hubs but also for contemporary living rooms and singular home-office corners.



# Transforming corporate spaces into collaborative hubs to feel inspired

Aleta Executive on casters and two-tone backrest.



Aleta Executive lounge wooden backrest and swivel base.



Scan for more

Aleta Executive on casters and wooden backrest.



Discover the story behind Aleta, our most iconic collection inspired by the movement of the shark's fin. A best-selling icon by Spanish artist-designer...

# Jaime Hayon



In 2017 the Aleta collection saw the light, combining the organic and friendly shapes of the Spanish artist-designer with the comfort provided by Viccarbe's Mediterranean influence. We met Jaime Hayon on a plane many years ago and we immediately knew it was connection at first sight.

Jaime Hayon, the undisputed international reference of Spanish design, designed a collection inspired by the silhouette and elegant movements of sharks. The details in the structure of the base and the soft curve of the backrest reflects the designer's eclectic personality and his unmistakable flair that fuses art and design.

Today, Aleta is one of our great icons. A best-seller capable of adapting to all kinds of scenarios and needs, it has managed to be an essential part in numerous international projects such as the Centre Pompidou in Paris, the McDonald's Global HQ in Chicago, the Takasaki theatre in Japan, the Goutal flagship store in Hong Kong, the DIOR offices in Paris, or the Regus and Spaces coworkings, among others.

Comprising a chair in standard and executive version, stool, lounge chair also in standard and executive and a low table, the versatility of the Aleta collection is infinite and allows to furnish workspaces, restaurants, hotels, homes and beyond.



Left to right: Aleta chair, stool, lounge chair, executive chair, executive lounge chair and low table.



2023

# Fuste

Designed by Victor Carrasco

Warm, balanced, and subtle. Fuste is our tribute to classic architecture. A collection of solid wood tables, designed to be the nexus where meetings, gatherings, and feasting encounter. Its visually light tabletop—available in oval or rectangular shape—contrasts with the thin vertical lines in its textured legs, conveying a special allure to its almost sculptural design. Fuste can include discreet electrification options, making working on it super convenient.



# Designed in solid wood to be the nexus where meetings, gatherings and feasting encounter



Fuste oval with electrifications and Copa chairs.



Leg details.



Wire management system through the leg.



☺ This collection allows for electrifications. Check page 30.

2023

# Zoco

Designed by Victor Carrasco

Zoco in leather and black base, and Zoco with white base.



# A well-balanced rounded silhouette, full of movement and deep comfort



Zoco metal base and Burin Mini low table.



Zoco is a comfortable lounge chair designed for collaboration. Modern, with a well-balanced rounded silhouette and full of movement, its cushioning is pleasant and provides instant comfort when sitting on it. Its four legs can include optional casters and a handle for agility taking it from one place to another. Great when seeking to improve focus in training and meeting rooms, make an impact in welcoming areas and achieve balance in any corner of the home.

Zoco on casters and handle.



2022

# Trivio

Designed by Jasper Morrison

Left: Trivio table and centrepieces. Right: Trivio and Maarten chairs wooden base.



# A bistro table in wood with one measurement, one height but endless combinations



Trivio table and Funda chairs.



Our first joint-venture with Jasper Morrison, a collaboration which has matured in time, slowly and thoughtfully. The result is Trivio, a bistro style table in wood with one measurement, one height, but endless color combinations. Trivio's centrepiece connects and conveys character to the rest of the table, rising its particular name. The table can include practical electrification options and is ideal for restaurants, canteens, libraries, and domestic and corporate spaces.

☺ *This collection allows for electrifications. Check page 30.*

Wire holder.



# THE COLLECTION

CHAIRS

 ALETA, BY JAIME HAYON	 ALETA, BY JAIME HAYON	 ALETA, BY JAIME HAYON	 ALETA, BY JAIME HAYON	 ALETA, BY JAIME HAYON	 ALETA, BY JAIME HAYON	 ALETA, BY JAIME HAYON	 ALETA EXECUTIVE, BY JAIME HAYON	 ALETA EXECUTIVE, BY JAIME HAYON	 ALETA EXECUTIVE, BY JAIME HAYON	 COPA, BY RAMOS & BASSOLS	 COPA, BY RAMOS & BASSOLS	 COPA, BY RAMOS & BASSOLS
 COPA, BY RAMOS & BASSOLS	 COPA, BY RAMOS & BASSOLS	 COPA, BY RAMOS & BASSOLS	 EARS, BY PIERO LISSONI	 EARS, BY PIERO LISSONI	 EARS, BY PIERO LISSONI	 FUNDA, BY STEFAN DIEZ	 KLIP, BY VICTOR CARRASCO	 KLIP, BY VICTOR CARRASCO	 KLIP, BY VICTOR CARRASCO	 KLIP, BY VICTOR CARRASCO	 KLIP, BY VICTOR CARRASCO	 KLIP, BY VICTOR CARRASCO
 MAARTEN, BY VICTOR CARRASCO	 MAARTEN, BY VICTOR CARRASCO	 MAARTEN, BY VICTOR CARRASCO	 MAARTEN, BY VICTOR CARRASCO	 MAARTEN, BY VICTOR CARRASCO	 MAARTEN, BY VICTOR CARRASCO	 MAARTEN, BY VICTOR CARRASCO	 MAARTEN, BY VICTOR CARRASCO	 MAARTEN, BY VICTOR CARRASCO	 MAARTEN, BY VICTOR CARRASCO	 MAARTEN, BY VICTOR CARRASCO	 MAARTEN, BY VICTOR CARRASCO	 MAARTEN, BY VICTOR CARRASCO
 MAARTEN, BY VICTOR CARRASCO	 MAARTEN, BY VICTOR CARRASCO	 MAARTEN, BY VICTOR CARRASCO	 NOHA, BY L.SERAFINI + R. PALOMBA	 NOHA, BY L.SERAFINI + R. PALOMBA	 NOHA, BY L.SERAFINI + R. PALOMBA	 NOHA, BY L.SERAFINI + R. PALOMBA	 NOHA, BY L.SERAFINI + R. PALOMBA	 NOHA, BY L.SERAFINI + R. PALOMBA	 NOHA, BY L.SERAFINI + R. PALOMBA	 NOHA, BY L.SERAFINI + R. PALOMBA	 NOHA, BY L.SERAFINI + R. PALOMBA	 QUADRA, BY MARIO FERRARINI
 QUADRA, BY MARIO FERRARINI	 SEASON, BY PIERO LISSONI	 ALETA, BY JAIME HAYON	 ALETA, BY JAIME HAYON	 ALETA, BY JAIME HAYON	 COPA, BY RAMOS & BASSOLS	 COPA, BY RAMOS & BASSOLS	 COPA, BY RAMOS & BASSOLS	 EARS, BY PIERO LISSONI	 EARS, BY PIERO LISSONI	 FUNDA, BY STEFAN DIEZ	 KLIP, BY VICTOR CARRASCO	 KLIP, BY VICTOR CARRASCO
 LAST MINUTE, BY PATRICIA URQUIOLA	 MAARTEN, BY VICTOR CARRASCO	 MAARTEN, BY VICTOR CARRASCO	 MAARTEN, BY VICTOR CARRASCO	 MAARTEN, BY VICTOR CARRASCO	 MAARTEN PLASTIC, BY VICTOR CARRASCO	 MAARTEN PLASTIC, BY VICTOR CARRASCO	 MAARTEN PLASTIC, BY VICTOR CARRASCO	 ACE, BY JEAN-MARIE MASSAUD	 ALETA, BY JAIME HAYON	 ALETA, BY JAIME HAYON	 ALETA EXECUTIVE LOUNGE, BY JAIME HAYON	 ALETA EXECUTIVE LOUNGE, BY JAIME HAYON

STOOLS

LOUNGE CHAIRS



2022

# Cambio

Designed by Victor Carrasco



Scan for more



Cambio tables in different heights.

# Cambio grows naturally, offering even more collaborative solutions for hybrid spaces

Cambio double base in white and Klip stools.



The best relationships as well as the finest designs evolve only in a very natural manner. Our wish was simple, transiting from a square to a round surface with kindness and fluency. This is how the Cambio collection of tables was born. A range of central bases, with discreet electrification options and many possibilities for tables intended to work, dine, lounge or unwind with comfort and grace.

The height of 105cm | 41.3" comes to the Cambio collection, offering even more collaborative solutions to singular spaces. The options multiply. Combine heights, shapes and finishes to create the best table to work and enjoy.

☺ *This collection allows for electrifications. Check page 30.*

Cambio triple base and Season chair.



2007

# Levitt

Designed by Ludovica Serafini + Roberto Palomba

Since 2007, the sensual and suggestive shape of the Levitt collection has been able to endure over time: evolving and being able to assume new upholstery. Levitt literally embraces every guest who sits on it. Its silhouette is a good-will statement, an exercise in pure ingenuity, of friendly design thought by and for people. Available as a lounge chair and a sofa, Levitt is that piece created to be observed from every angle.

Levitt sofa and Ryutaro low tables.



Scan for more

Levitt lounge chairs and Giro low table.



# Step

Designed by Vincent Van Duysen

Step sofa and Serra low table.



Step sofa and Giro low table.



Exquisite proportions, infinite compositions, and surprising comfort define Step, a modular sofa designed by the renowned architect Vincent Van Duysen. Decorative seams give warmth to this unique collection of sofas and lounge chairs, which is pure functionality and adaptability. Finding the balance between durability and comfort, the Step collection was born as a modular system with which the user could compose and create his own sofa. Let your imagination be free.

☺ *This collection allows for electrifications. Check page 30.*



Scan for more

2020

# Funda

Designed by Stefan Diez

The commitment to maximum sustainability and comfort shapes Funda, the range of seats conceived by designer Stefan Diez. The collection —made up of chair, stool, lounge chair, and a bold version— is presented as a construction made up of two differentiated parts, two pieces capable of extending the life cycle of the product indefinitely. Designed to last, Funda has a curved and friendly shape, combined with a singular upholstery known for its wrinkles. In this way, Funda manages to evoke the maximum expression of comfort for workplaces and further.



Scan for more

# Shaped to promote circular design and create reassuring corners

Funda chairs and Trestle table.



Funda lounge chair and Burin Mini low table.



2022

# Funda Bold

Designed by Stefan Diez



Funda Bold in residential property, Belgium.



Following the great success of the Funda collection, we extended the range with Funda Bold, an oversized lounge chair with a matching ottoman, designed also by Stefan Diez. Funda Bold represents the balance between precision and the human-centered approach of its designer. His constant search for both industrial innovation and visual appeal has achieved a collection with curved and friendly shapes that fosters circular economy and deep comfort. Its development has been based on combining a metal structure, designed to last over time, and an upholstered seat that can be replaced after years of use or severe wear and tear. Bold comfort reinvented.



Scan for more

# Colubi

Designed by RT Design

A combination of functionality, comfort and a neat Mediterranean aesthetic with geometric lines. Colubi is that contemporary lounge chair with a special silhouette that invites you to sit for hours, widely used for office projects and collaborative spaces all around the world. Its iconic steel structure, its comfortable seat and the wooden details of its armrests bring a special character to any room. And a bonus, it is available for outdoor.

Colubi lounge chair and Aleta low table.



Colubi outdoor.



2018

# Aleta Lounge

Designed by Jaime Hayon

Aleta lounge is comfortable, inviting and very aesthetic. Two different bases— in wood or metal—shape this welcoming and singular design by artist-designer Jaime Hayon, thought to lift collaborative workspaces, restaurants, and homes, adding that fun yet sophisticated tweek to the atmosphere. As a plus, Aleta lounge can be produced with or without armrests, making it an icon to add comfort whilst waiting in a reception area, having a solo moment at the office or in presidential rooms.

Aleta lounge wooden base and Serra low table.



Scan for more

# Ace

Designed by Jean-Marie Massaud



Ace is one of those designs that are born with that *je ne sais quoi*, returning us to the most essential and absolute comfort. As a product, it will subtly attract our attention with its slightly wrinkled and friendly upholstery. It will welcome us and, ultimately, give us the space we need to reconnect. In recent years, Ace has been incorporated into the workspaces of large multinationals such as Nike or Toyota. In some as a space for informal and collaborative meetings. In other, it was also incorporated in an individual format: located inside private offices or rest areas, and set up as a place to go in search of a universe of one's own. It's time to regain a sense of well-being.



Scan for more

2013

# Step Lounge

Designed by Vincent Van Duysen

Finding balance between endurance and comfort, Step was born as a modular system of sofas and lounge chairs in which the designer could compose and create his own seating solution for collaborative spaces. As a lounge chair, Step is everything a contract project would need: a minimal aesthetic, an immaculate durability and optimum comfort to keep users sitting straight but relaxed. Choose between narrow or wide armrests to find the best fit for your space.

⌚ This collection allows for electrifications. Check page 30.

Step sofa and lounge chair with narrow armrests.



# Savina Lounge

Designed by Victor Carrasco

Savina lounge chair and Burin Mini low tables in two heights.



Savina sofa and Savina lounge chairs.



Savina joins our furniture collection as a modular collaborative island. As a lounge chair, Savina is truly comfort and therefore, highly recommended for lounges and welcome areas of corporate offices but also great to create cozy reading corners in living rooms. The lounge chair is ideal for solo working yet powerful for casual team meetings when combined with the sofa of the same range. The collection can include practical hidden casters, making it easy to relocate or move whenever required.

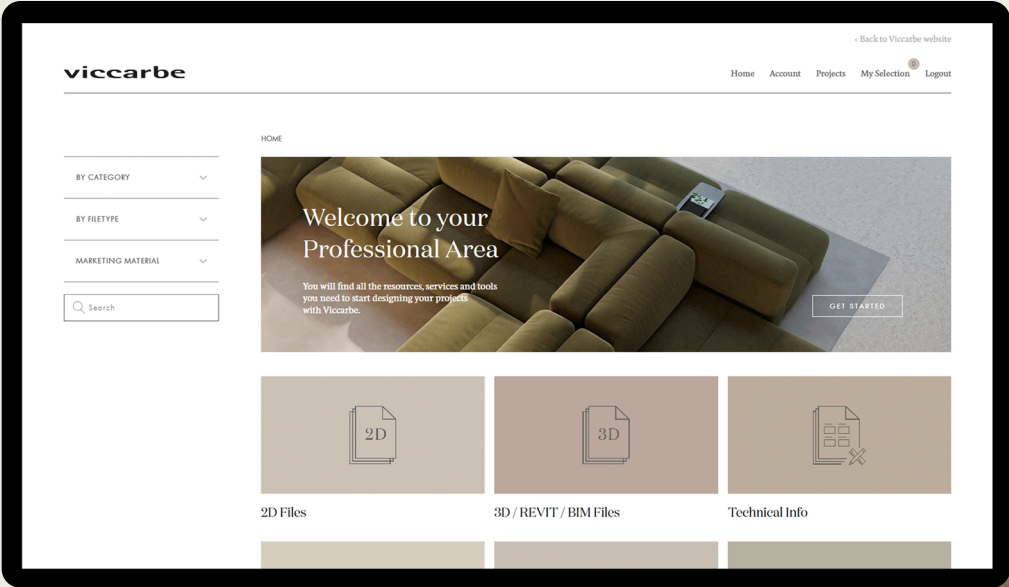
☺ *This collection allows for electrifications. Check page 30.*



Scan for more

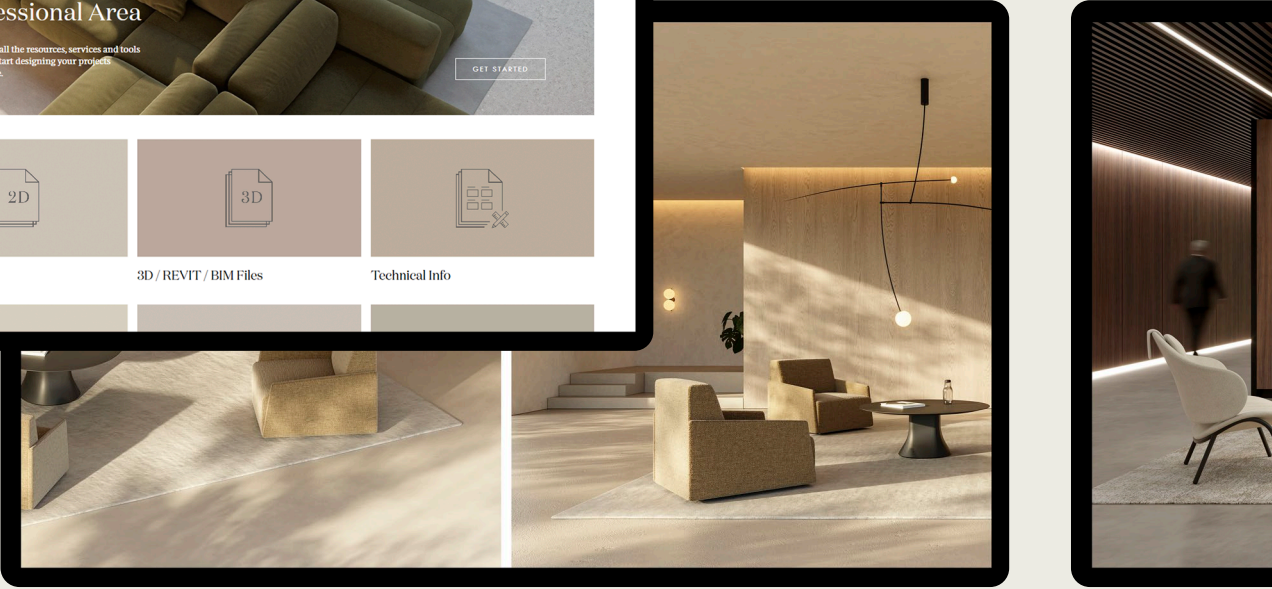
# PROFESSIONAL AREA

We want to welcome you to Viccarbe's Professional Area, your workspace inside our website with all the resources you need to work with our collections. Find everything you are looking for in a single virtual space designed for your convenience with technical files, catalogues, images, certificates, user manuals, 3D, 2D files, and more. Register once to access for life.



Click to register

→ Under the same virtual portal, architects, designers and interior design professionals will find everything they need: technical data, 2D, 3D, REVIT and BIM files, image bank, certifications and many more.





---

You can read and download our latest catalogues, a powerful visual tool to get immersed into our world of collaborative furniture.

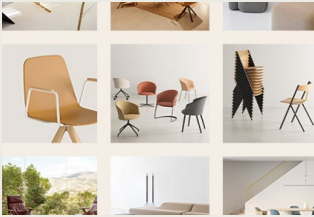
CATALOGUES



---

Access the digital cards of our Standard Fabrics, graded-in fabric selection, materials and all the finishes available for our collections.

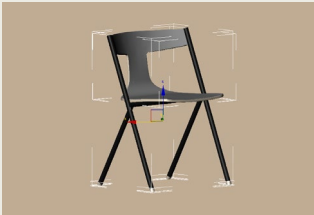
FABRICS & FINISHES



---

Access our high-res and low-res images to prepare projects, moodboards and even share inspiring content about our brand on your social media.

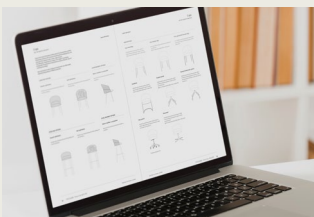
IMAGE GALLERY



---

Browse any technical data, 2D, 3D, REVIT and BIM files you need to find the best options to plan your interior design projects.

RESOURCES



---

In the future, the latest pricelist will be also ready to view in a glimpse. Stay tuned for more.

PRICELIST



Scan for more

2016

# Sistema Lounge

Designed by Lievore Altherr Molina

This lounge chair is part of the iconic Sistema collection designed by Lievore Altherr Molina in 2016. A refined lounge chair with multiple possibilities as you can have it with or without legs, with different armrests and even with multiple backrest heights, offering great adaptability. Its comfortable seat facilitates individual work and interesting conversations at the office. With friendly and pleasant shapes for residential projects and a comfortable appeal for contract and hospitality spaces, Sistema is a design that fits smoothly in all kinds of contexts.

☺ *This collection allows for electrifications. Check page 30.*



Sistema Legs upholstered wooden armrests.



Sistema Legs curved upholstered wooden armrests.



Sistema Legs high upholstered arms.



Scan for more

2019

# Copa Lounge

Designed by Ramos & Bassols

Copa wooden base and Trino tables with marble and T handles.



Copa Soft wooden base.



With an elegant four-legged base made in wood, Copa lounge landed in our collection keeping proportions and comfort as the main premises. Its height —slightly lower than that of the chair — is perfect to create secure spots in which to conversate and collaborate in workplaces and beyond. It has been shown that, at a lower altitude, there is a greater likelihood of reaching greater understanding and trust between people. Why don't you give it a try?



Scan for more

2011

# Penta

Designed by Toan Nguyen

In the case of Penta, we sculpted a statement lounge chair with very thoughtful proportions, generating a kind of connection between everyone who saw it for the first time. A design created to be the perfect guest chair for presidential offices, receptions and lounge areas. And there is more. Unexpected details in Penta are capable of bringing a smile to anyone who ends up sitting on it. Discreetly, Penta can incorporate a practical swivel base. An invisible detail capable of changing the attitude between partners in the same space, leading to successful conversations.

Penta lounge chair and Burin mini low tables.



Scan for more

# Fedele

Designed by Victor Carrasco

Fedele lounge chair and Season pouf.



Fedele lounge chairs and Step sofa.



Fedele was designed to become an acknowledgment to people. This is what its name means in Italian: faithful. It was born from honesty, from the perfect balance between its rounded forms and its friendliness. Without going far from reality, the collection is loyal and lives at the service of all of us. To stay at the time and place, to wait in intermediate zones. To facilitate, to let collaboration happen. Made to order in Spain following your needs, Fedele embraces everyone who sits on it.



Scan for more

2013

# Brix

Designed by Kensaku Oshiro

With Brix, we manage to synthesize in a single design the function of a seat and an auxiliary table. Along with Kensaku Oshiro, we satisfied this need with simple geometric shapes of surprising comfort. Collaborative spaces have been redefined to search for greater concentration whilst maintaining connections between people. Rooms that encourage concentration, inspire and are also a place of interaction, visually stimulating and long-lasting. Brix is great for this, allowing the creation of elegant configurations in common areas thanks to its geometric design and dimensions. It is a multi-purpose seat intended to make the user's life easier at a time when agility is a priority.

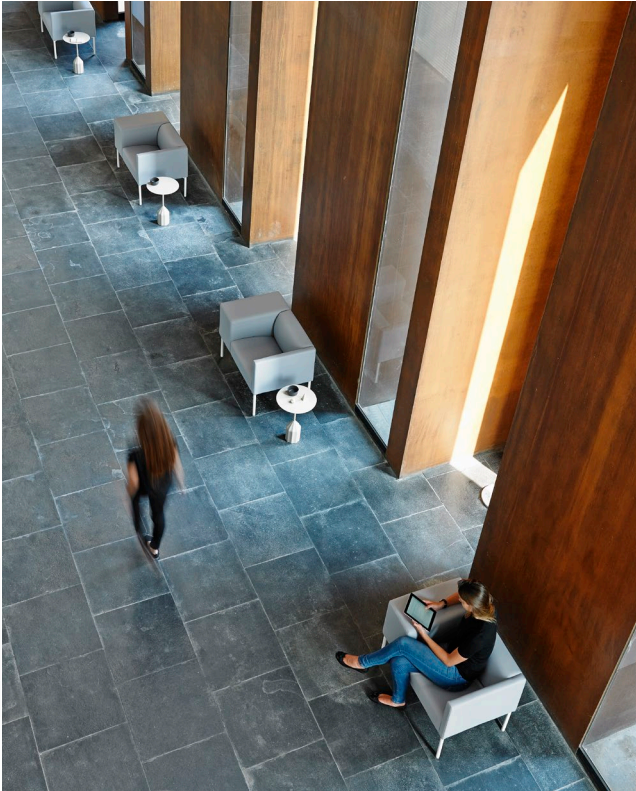
☺ *This collection allows for electrifications. Check page 30.*



Brix wide arms and integrated table, Brix narrow arms and Shape low table.



Brix lounge chairs and Burin mini.



Scan for more

# Nagi

Designed by Tomoya Tabuchi

Nagi was born swinging between the present and the future. Wishing to define the future from calmness and reflection. Nagi makes corporate spaces more pleasant, holding the people who needed to take a solo moment, either in its high or low back version, in its fixed or in its modern rocking chair model, letting its silhouette simply pick them up for a moment. A special connection to boost concentration away from our fastly paced lives.

Nagi rocking base, Giro low table and Step sofa.



Nagi low backrest.



Scan for more

2017

# Maarten Lounge

Designed by Victor Carrasco

An ideal complement to informal meeting spaces or reception areas in large corporations or modern homes. Maarten Lounge has a slightly lower height than the chair of the same collection and a wider and more generous seat. This lower height is ideal to foster the exchange of ideas and make users unwind whenever they need to. Maarten's contemporary vibes can make any corner feel even more inviting, providing the necessary dose of flexibility to spaces in which one can let communication and encounters flow. The generosity of its seat and its optional armrests add a great balance to any room that is in the search of comfort and design.

Maarten lounge wooden swivel base and armrests with Step sofa.



WEB PAPER



Scan for more



2005

# Wrapp

Designed by Marc Krusin

Wrapp wooden base and Serra low table.



Wrapp swivel base.



The function and form of the Wrapp lounge chair represents the name that it bears. As a good hostess, Wrapp welcomes, surrounds and takes care of the people, creating a reassuring spot in which to concentrate, lounge and disconnect. A lounge chair with a singular silhouette, made for offices, hospitality interiors, hybrid spaces and residential projects, with an unforgettable aesthetic and two bases—wooden and metal—that help to create the best impression.



Scan for more

2019

# Quadra

Designed by Mario Ferrarini

Quadra is inspired by a dance of two figures, turning in complete harmony, in dialogue, embracing. A *'pas de deux'* between a technical, metal slim structural core and the warmth of wood. Dressed differently, the two bodies display a sense of alchemy from every angle. Just like the compass of the architect and the paper on which he draws. A surprisingly comfortable chair, fully capable of resisting the test of time with firmness, which is perfectly prepared to be placed in all types of spaces and interior design projects. Quadra balances simplicity with durability, versatility with the personality of a great icon. Available in multiple finishes and with a stackable version, making possible to arrange up to 10 units together.



Quadra chair and Trivio table.



Quadra chair, stackable version.



Scan for more

# Ears

Designed by Piero Lissoni



Ears bar stool, upholstered.



Italian designer Piero Lissoni devised Ears, a wooden collection of chairs and stools with a comfortable and enveloping design, as light in terms of materials as it is resistant to aging. Ears' sinuous shapes keep intact a style capable of reminiscing the mid-century icons. Its balanced proportions makes it an ideal option for collective and private areas: meeting points, restaurants, auditoriums, educational spaces, libraries and collaborative offices.



Scan for more

2014

# Klip

Designed by Victor Carrasco

The Klip family has become the great ally of corporate and educational spaces around the world, from large orchestra rehearsal rooms to canteens and library reading areas. But the list goes on: desks, areas for workshops, auditoriums, classrooms, collaborative areas, theatres, and spaces in between. It knows no limits as a seat. Klip combines design and functionality all in one. Upholstered, in wood, on casters, swivel, as a chair, and as a stool, Klip's possibilities are endless.



Klip upholstered on casters and Trestle table.



Klip knows no limit as a seat: easy, versatile and affordable.



Klip swivel base, upholstered.



Klip Soft metal base.



Klip Soft stool, swivel metal base and arms.



Scan for more

2014

# Maarten Table

Designed by Victor Carrasco

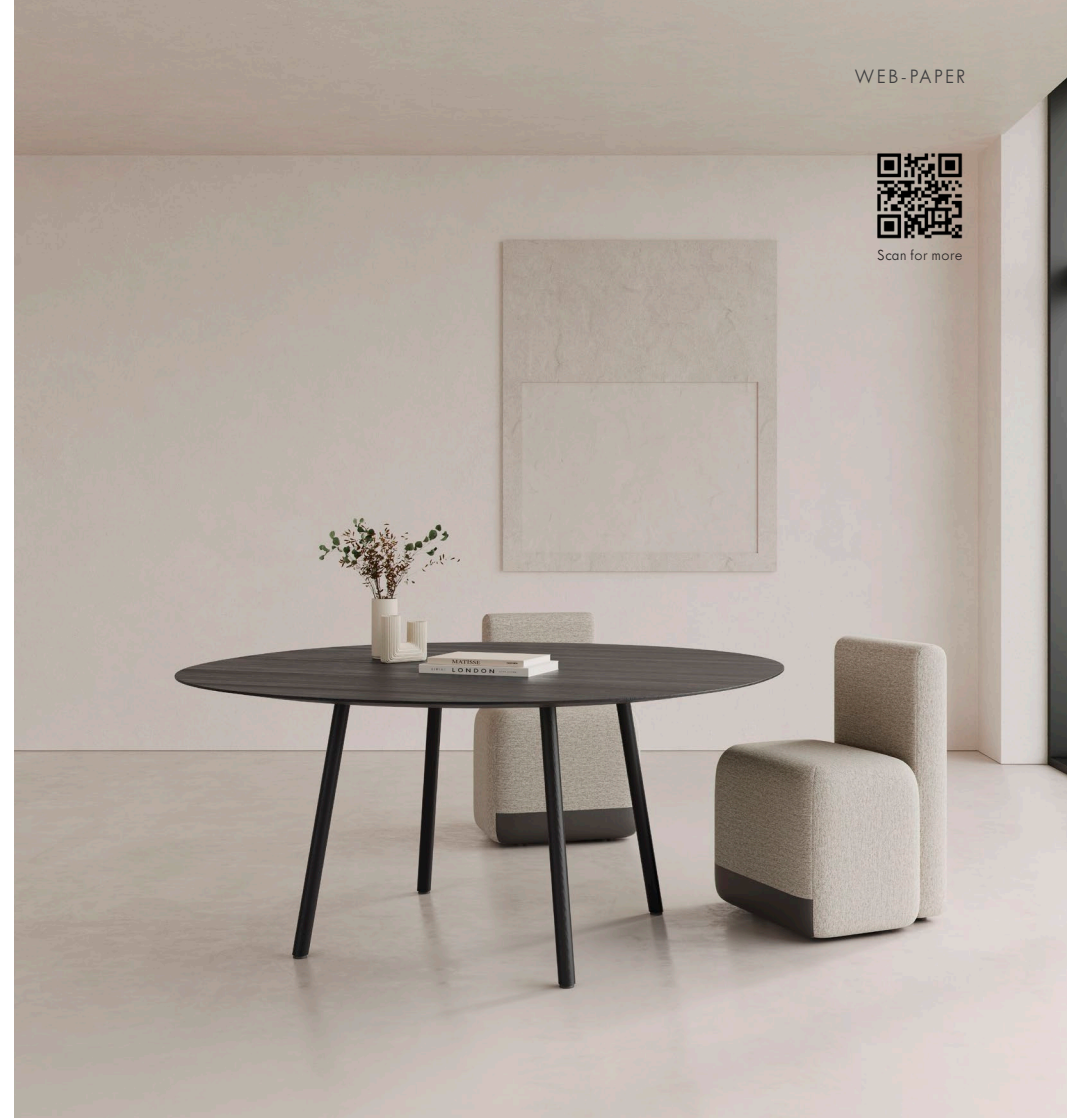
Maarten has infinite uses, as well as finishes, shapes and sizes as you may require. Its minimalist soul contrast with the ease of connection with the end user. This family of tables in regular and low heights knows how to put values such as closeness into practice. It does not conform to usual shapes like a circle or a rectangle. Its tabletops range from large diameters to more contained widths, always with unique and recognisable shapes, capable of going beyond the norm and approaching the most human facet of design. With Maarten, the possibilities are endless, even allowing for electrification and casters.



WEB-PAPER



Scan for more



☺ This collection allows for electrifications. Check page 30.

2015

# Stan

Designed by Vccb Studio

Stan table and Maarten chair sled base.



Contemporary, functional and effortless, Stan is a versatile table collection with multiple possibilities to fit perfectly in any meeting room, reception area, restaurant, canteen or lounge zone. Part of multiple contract projects, Stan is an all-rounder with no fuss but with a strong soul that gives space to what really matters. Its tabletop is available in black or white, and in a squared or rounded shape with different sizes and heights. Where to next?

*\*Stan is not available in USA or Canada.*

☺ *This collection allows for electrifications. Check page 30.*



Scan for more

2021

# Solar

Designed by Marc Krusin

Our most disruptive swivel table concept that leads to new ways of working and collaborating for both indoor and outdoor scenes. Solar is made up of a table with an integrated seat, and can rotate 360° according to the user's needs, guaranteeing collaboration but also privacy. As an extra, Solar includes electrifications and a small practical hook under the tabletop to keep your belongings close at all times.

🕒 This collection allows for electrifications. Check page 30.



Scan for more

Battery pack detail.



Solar tables and Season chairs.



# Last Minute

Designed by Patricia Urquiola

Last Minute stool counter height.



Last Minute stools and Trestle table counter height.



Masterfully envisioned by Patricia Urquiola, the Last Minute stool became our first international collaboration with a designer. To achieve the stool's singular silhouette, we embarked on many challenges until we found the perfect one: a last minute version, the final design that was perfect and originated its particular name. Urquiola's deep perfectionism taught us how to find success based on effort, taking always care of the smallest details and betting on praising the differential value of each piece. Available in three heights and multiple finishes to complement any space.



Scan for more

2018

# Torii

Designed by Ludovica Serafini + Roberto Palomba

The timeless Torii bench was born as a simple yet elegant seating system, capable of projecting a great identity. Torii is composed of two wooden pieces connected by a very recognizable metal structure. Torii stands out not only because of its front perspective, but also because of its fine back. The bench is an evocative inspiration and a kind approach to the gateway in Japanese temples. Torii respond to all needs as it has the same height as a chair and its clean lines makes it easy to perform in any space.



Torii white metal base, Trestle table and Maarten chairs sled base.



☺ This collection allows for electrifications. Check page 30.



Scan for more

# Trestle Bench

Designed by John Pawson

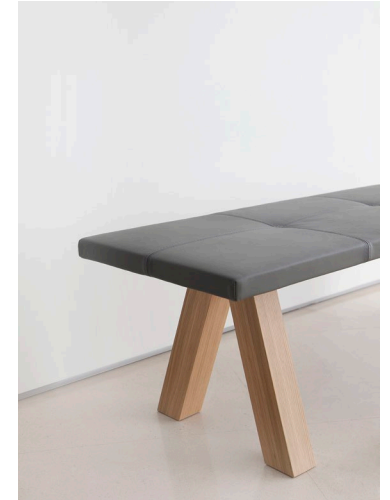
Trestle bench upholstered and Trestle table.



Trestle bench and Serra low table.



Trestle bench, upholstered.



The Trestle bench is the perfect complement to the Trestle table. A well thought-out minimalist design with just the right amount of personality and comfort, making it an essential in meetings or celebrations. Perfect also when placed individually in high-traffic intermediate spaces, corridors or halls, the bench radiates the same essence that we find in all the elements by the British designer. Once again we enjoy an exercise in maximum functionality and minimum prominence. Trestle was born for sociable spirits and for collective spaces.



Scan for more

2016

# Sistema Bench

Designed by Lievore Altherr Molina



Scan for more

Sistema bench with low table module.



Our Sistema collection is as broad as your imagination goes. When speaking about Sistema bench, we find the perfect ally to commercial and contract spaces such as receptions, lobbies, intermediate spaces and even residential properties. The bench can grow as further as you need it to, including practical low table modules to make users find everything they need on hand. As a bonus, Sistema can include practical electrifications, another step forward in our commitment to constant innovation.

☺ *This collection allows for electrifications. Check page 30.*



Accessories



**Mediterranean Essence, by Veeb Studio**

Fragrance for collaborative spaces in mikado format with a fresh and citrus touch that evokes the spring of our Mediterranean. Contains orange blossom essential oil and green fig, natural elements of great purity for a soft aroma that comforts instantly. Like our more than 300 days of sunshine per year.



Scan for more



**Window collection, by Vincent Van Duysen**

This collection of coat racks and umbrella stands materializes the usual serenity and sensuality of the pieces conceived by the architect Vincent Van Duysen. Inspired by minimalist sculptures, the 'windows' of the rack were carefully designed for the proper care and correct hanging of clothes.



Scan for more

# The Collaborative Outdoor

The Collaborative Outdoor is raised to foster connections, creativity, observation, inspiration, and the personal growth of our teams, connecting us to nature and bringing back our cultural roots. Nature stimulates reason and emotion. It is the perfect canvas to start creating. With this in mind, some of our iconic collections move outdoors, offering more than just products, but solutions to enjoy and appreciate the *alfresco* area as an extension of the office and workspace. Feel, live, collaborate and engage outdoors with Viccarbe.



Zoco lounge chairs and Trino table with T handle.

# Making the outdoor area a natural extension of the workplace

Cambio table with Maarten chair sled base.



Burin table with Maarten stool sled base.



Sistema sofa, Colubi lounge chair and Maarten low table.

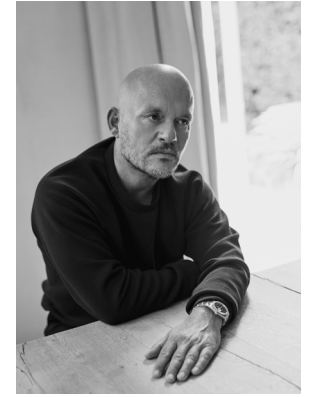


Scan for more

*Our outdoor collections:*

Ace | Burin | Cambio | Colubi | Common | Maarten  
Savina | Season | Sistema | Solar | Trestle | Trino | Zoco

# OUR DE SIG NERS

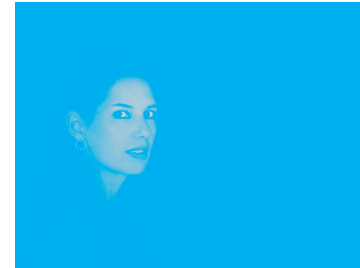
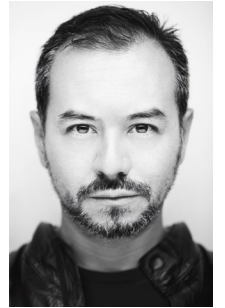


- Elisa Ossino
- Jaime Hayon
- Jasper Morrison
- Jean-Marie Massaud
- John Pawson
- Jorge Pensi
- Kensaku Oshiro
- Lievore Altherr Molina
- Ludovica Serafini + Roberto Palomba
- Marc Krusin
- Mario Ferrarini





Naoto Fukasawa  
 Patricia Urquiola  
 Pedro Paulø-Venzon  
 Piero Lissoni  
 Ramos & Bassols  
 Stefan Diez  
 Toan Nguyen  
 Tomoya Tabuchi  
 Victor Carrasco  
 Vincent Van Duysen



Collaboration is in our DNA as our Mediterranean city has been the meeting point of multiple cultures over centuries. This is reflected in our collections as our aim is to create them with the world's leading designers. We feel proud they wish to reinterpret our Mediterranean lifestyle and materialize it into kind, comfortable and longlasting furniture icons. It is this blend of cultures and backgrounds what defines us and makes us different.



Scan for more

# Low tables

## Burin Mini

by Patricia Urquiola



*When design meets functionality. This is our low table collection, available in multiple sizes and shapes. A fantastic way to complement spaces, adding a much more holistic approach to the scene.*



Scan for more

## Stan

by Vccb Studio

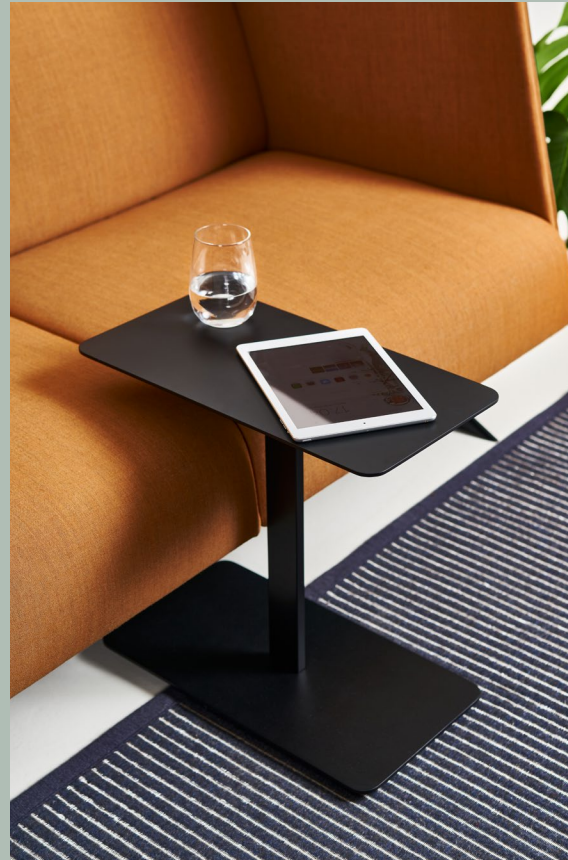




Our best-selling sculptural side table by Urquiola, a tribute to the artisanal wood carving tools. Available in two heights, different finishes and with the option of including a handle to add character and versatility.

## Serra

by Victor Carrasco



Serra is a side table with a functional design, ideal as a laptop holder in casual meetings, as it slides easily on the sofa thanks to its thoughtfully designed height.

*\*Serra is not available in USA or Canada.*



An all-rounder for contract, hospitality and educational projects. Stan adapts to every environment with the right proportion between functionality and design.

*\*Stan is not available in USA or Canada.*

## Tiers

by Patricia Urquiola



Tiers is a refined reinterpretation of the traditional nest tables by Urquiola. Two tops with different heights joined together by a visually light support, designed to be a great ally to sofas and corners reserved for casual gatherings in working or living interiors.

# Low tables

## Shape

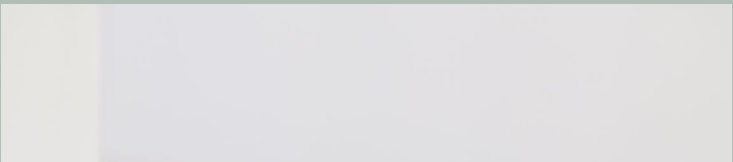
by Jorge Pensi



Shape is that decorative side table with a twist, a blend between minimalism and geometric design. Almost like a small sculpture, its balanced proportions and finishes make Shape a cult piece, adding a clever touch of color to any corner.

## Giro

by Pedro Paulø-Venzon



## Cambio

by Victor Carrasco



In its low version, Cambio fits easily in any meeting or living room. Due to its carefully thought proportions and its refined silhouette, Cambio is a practical coffee table with a comfortable height to complement any of the sofas in our collaborative collection.



## Ryutaro

by Victor Carrasco



Giro uses circular forms to generate many interpretations: it can remind us of the human figure, and how it is spinning on itself, it suggests a relation of monocycles and, of course, movement. This movement is one of the table's key points as it seems to be balancing itself, floating between the least possible items. Definitely a stand-out for any collaborative atmosphere.



Scan for more

With a singular design that seems to be floating, Ryutaro adds a modern feel to any space. Pick two tables to achieve a nest coffee table set with some extra space. Available in different finishes such as warm oak wood, polished or lacquers.

## Aleta

by Jaime Hayon



Aleta low table has the same curved silhouette that shapes the iconic family designed by Spanish artist-designer Jaime Hayon. It is that special object that lifts any working or living space, adding the right amount of character.

3/3

## Low tables

**Maarten**

by Victor Carrasco

**Common**

by Naoto Fukasawa



Our singular Common collection also includes a matching table, ideal to complement the bench of the same collection but also useful when seeking to upgrade any intermediate space.



In the shape of a low table, Maarten is the ideal complement to a quiet working corner. A visually light low table available in different shapes and sizes to facilitate interaction and act as a comfortable support in gatherings and meetings.



Scan for more

## Bamba

by Pedro Paulo-Venzon



Bamba represents the fine line between design and art. A cult side table with a sculptural soul that completely changes any interior. A true work of art that fills any space just with its presence.

## Trino

by Elisa Ossino



Trino has a sculptural soul and the inherent elegance of a design capable of expressing and complementing all types of contract, hospitality and residential interiors. Three iconic handles are available—spheric in solid marble by Italian brand Salviati or oak and in metal with a T shape—making the low table stand out and really easy to move.

II Edition

# Viccarbe 3D Awards

Viccarbe 3D Awards is the first international design contest brought up in 2021 to recognize the talent of the designers that wish to provoke change and promote spaces that foster collaboration in all its facets. We launched this digital competition to discover disruptive talents in design and architecture and we have discovered over 400 new voices from all around the world. To win there is a challenge: design a rendered scene of a collaborative space including Viccarbe furniture.

Take a look to the proposals designed by the winners of the second edition. Next challenge coming soon, stay tuned.



*Alejandra Mikelj*

— First Prize II Edition

Discover her designs on Instagram: [@mikelj.studio](#)



*Eva Maes*

— Second Prize II Edition

Discover her designs on Instagram: [@maes\\_eva](#)



Scan for more

# CONFIGURE YOUR OWN PRODUCT

Our furniture adapts naturally to any setting, thanks to the multiple options, finishes and compositions available. With our online product configurator, you are able to design and customize, in real time, the collections that best suit your projects and needs. Choose from unlimited upholstery options, materials and structures to find the perfect fit for your interiors.

The free configurator includes an Augmented Reality function when using it from any mobile device or tablet, for both Android and IOS systems.

With this tool you will be able to see in real time and true size how your chosen furniture composition will look in the space you are designing. Live the Viccarbe experience no matter your location and discover all the existing possibilities of our collaborative furniture.



Scan for more

Our online configurator helps you find the right furniture for the projects you are working on.



# Viccarbe HQ Virtual Tour

About us

Visit our headquarters in Valencia from any location. The virtual tour of Viccarbe HQ is now available, a 360 journey through your screen that will allow you to see every corner of our offices, from the ground floor to almost all the spaces, including our showroom. Be at the heart of our space, where you will be able to see up close all our proposals for collaborative spaces.

We invite you to step inside, it is open 24/7.



Valencia, Spain



Scan for more

## Sustainability

We believe that sustainability means also designing and producing furniture that will stay with us for the longest time possible. Consequently, the concept of sustainability becomes important for us right from the furniture's conception and until the end of its useful life cycle. Producing sensibly and consume no more than necessary. Quality ahead of quantity.

Viccarbe's environmental management system ISO 14001 was first certified in 2007. This allows us to demonstrate and review appropriate environmental performances and an adequate control on the impact of our activities, services and products. We also offer Product Environmental Profile certifications (PEP), a type II self-declaration with relevant data about materials that make up products and their individual impact. You will be able to find more information at [viccarbe.com](http://viccarbe.com).

We know this is a long journey but we are convinced we are on the right path to continue to lead and implement more sustainable practices in the design industry.



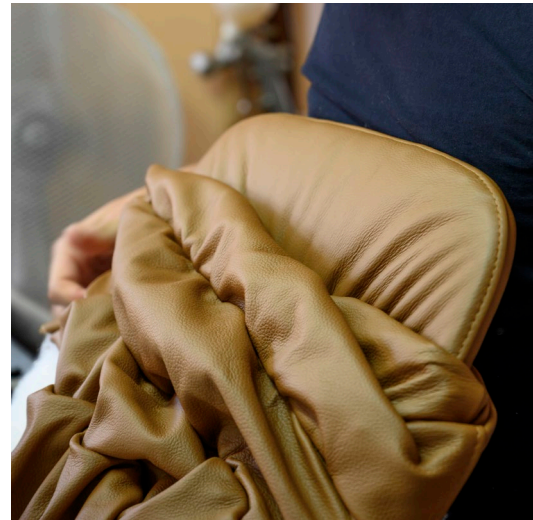
About us

## Quality & Warranty

About us

We offer a 10 year factory warranty as our primary mission is to create timeless designs that last a lifetime and therefore we employ only the highest quality standards. We strive to produce the best quality furniture, while still innovating in new materials and collaborating with the most renowned designers and experienced suppliers. We hope you enjoy our collections for a long time to come.

Since 2007, our production is carried out in Spain under the environmental certification ISO 14001 and ISO 9001. Our collections are ANSI BIFMA and UNE certified, responsible for design and safety standards that apply to everything from the quality of the furniture to the health of work.



Scan for more



**Concept & Art Direction**

*Viccarbe*



**Let's begin.**

*We would love to help you equip your spaces no matter their size or their location. Let's find together the best collaborative designs to suit your projects and make them unique.*





[VICCARBE.COM](http://VICCARBE.COM)