

# IGP-DURA<sup>®</sup>*xal* 42 Velvet Skin Collection

---

Super durable façade coating with the elegant, deep matte appearance of anodized aluminum – perfect as a premium architectural design element.

Enhance architectural designs with a velvety, sophisticated metallic coating.

**Incomparable in every detail.**

### **Velvety matte perfection**

IGP-DURA<sup>®</sup>*xal* 4201 sets new standards for super durable powder coatings in architecture. The coating captivates with its metallic shimmer, elegantly highlighting the dynamic contours of architectural designs – without disruptive highlights. A flawlessly smooth paint film envelops the object like a second skin, accentuating its geometry in a unique way. This super durable powder coating is ideal for use in harsh climates, ensuring long-lasting protection and enduring beauty.

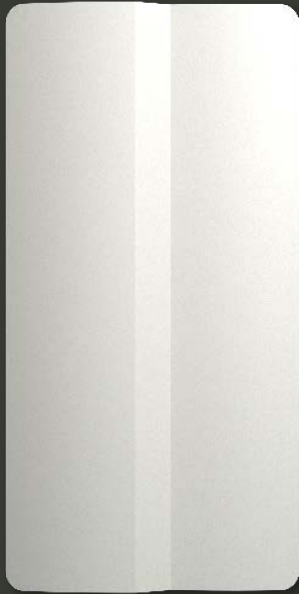
### **Your benefits at a glance**

- + Process safety through compliance with global quality standards
- + Long-term value retention thanks to enhanced color and gloss stability
- + Elegant, deep matte surfaces with an anodized look
- + Profile-specific application, ideal for complex workpieces
- + Environmentally friendly due to high material efficiency and VOC-free formulation
- + Cost-efficient thanks to single-coat application
- + High opacity, even on inhomogeneous substrates

# IGP-DURA<sup>®</sup> *xd* / 42



## 4201 — Warm Radiation



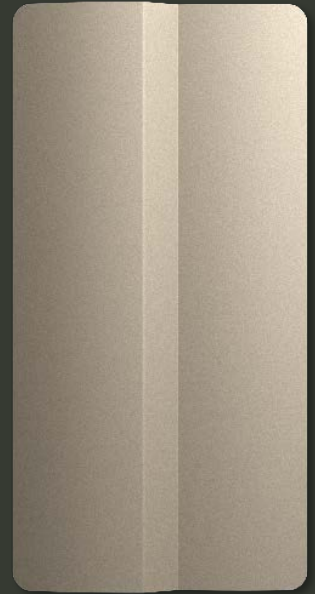
4201E94136L30  
Chiffon Silk



4201E77499L30  
Silver Tinsel



4201E76256L3F  
Style 23



4201E77903L30  
Titan Power



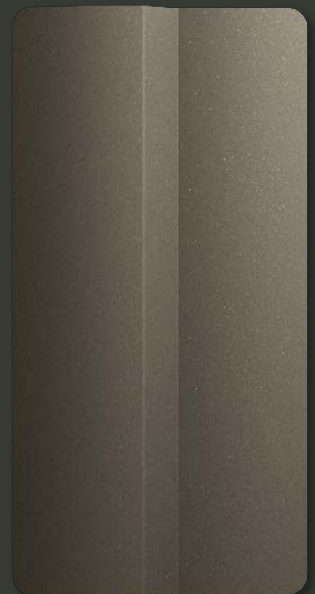
4201E83775L30  
Velvet Brown



4201E82467L3F  
Style 24



4201E83934L30  
English Bronze

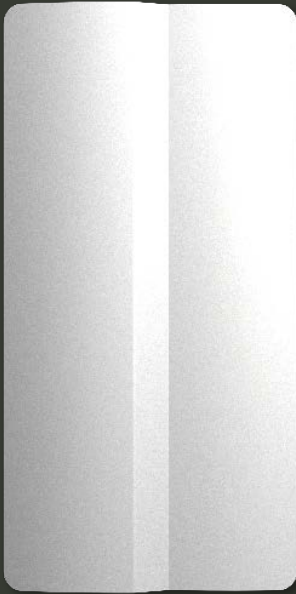


4201E83829L30  
Amaranth Glow

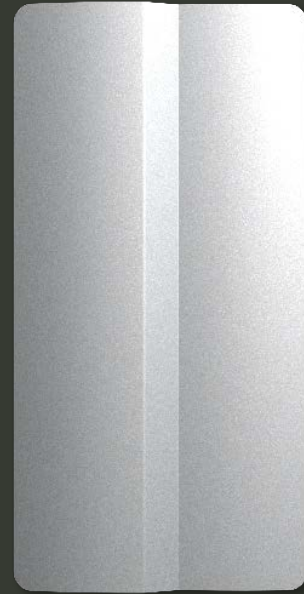




### 4201 — Tech Cold



4201E79975L30  
Natural Silver



4201E94063L30  
Fine Palladium



4201E75307L3F  
Radiant Silver



4201U71386L10  
Galaxy Depth



4201E83361L30  
Quarzo Fumo



4201U75249L10  
Blued Metal



4201E63923L3F  
Jungle Street

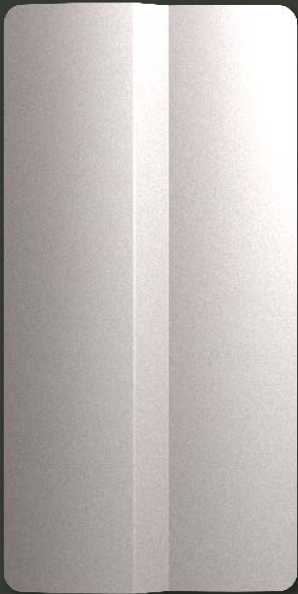


4201U90171L10  
Traffic Black





### 4201 — Brave Colours



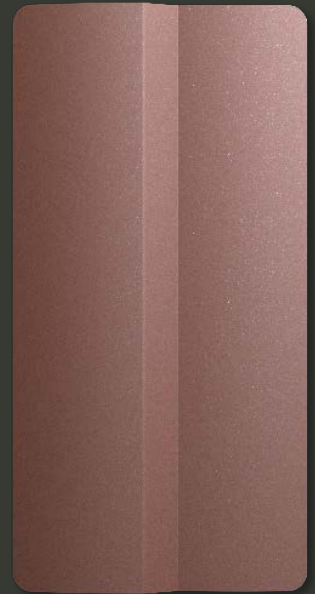
4201E32377L30  
Warm Grey



4201E54218L30  
Admiral Blue



4201E84585L30  
Technical Ceramics



4201E83618L3F  
Rare Earth



4201E64618L3F  
Jungle Thicket



4201E41754L30  
Rhodonite Stone



4201E94085L30  
Silver Beige



4201E13343L3F  
Glory Curry



# Elegance meets strength.

## Green Building Credits – focus on sustainability

Super durable IGP-DURA<sup>®</sup>*xa*/ 4201 coating products are based on a PFAS-free binder system, which provides a non-toxic and eco-friendly coating solution. Their environmental impact is clearly and transparently documented in an environmental product declaration reviewed by an independent third party, in accordance with EN 15804+A2. Additionally, this product is registered with the German Sustainable Building Council (DGNB) and is ideal for sustainable construction projects.



## Sophisticated elegance in deep matte

With their unique micro-texture, these products create an elegant deep matte gloss effect, beautifully replicating the appearance of anodized matte surfaces with a subtle metallic shimmer. The innovative binder combination ensures outstanding gloss retention, excellent levelling, and high resistance to chemicals.

## Certified quality

The IGP-DURA<sup>®</sup>*xa*/ 4201 series is certified in line with the QUALICOAT quality guidelines for aluminum and Qualisteelcoat for steel and galvanized steel, meeting the highest standards. It has also been tested and validated in accordance with the stringent requirements for super durable façade coatings outlined by the American Architectural Manufacturers Association (AAMA). These certifications ensure consistent quality and compliance with globally recognized standards.

## IGP-Effectives<sup>®</sup> technology – process safety and material efficiency

Effect shades produced with the IGP-Effectives<sup>®</sup> technology are characterized by a uniform and consistent effect distribution. This enhances color consistency, even if different application parameters are used or several coating companies work on the same project.

In reclaim operation, IGP-Effectives<sup>®</sup> technology achieves high recovery rates of overspray even after multiple cycles, thereby maximizing material utilization almost completely and combining environmental with economic benefits.

## IGP-DURA<sup>®</sup>*xa*/ 42 product range

Product group	Surface aspects	Approvals / test reports
4201A-L1	Solid color	<b>Smooth finish, deep matte</b>  <b>On aluminum:</b> QUALICOAT Class 2 and AAMA 2604  <b>On steel and galvanized steel:</b> Qualisteelcoat ST2/HD2, tested on IGP-KORROPRIMER 60  <b>Fire behavior:</b> Test report in accordance with DIN EN 13501-1
4201E-L3	Effect shades produced using the IGP Premium method	
4201U-L1	IGP effect shades formulated with IGP-Effectives <sup>®</sup> technology	

Manufacturer's declaration: The shades are marketing samples and may differ from the actual color and gloss level of coated workpieces sharing the same article number.



**Super durable powder coating  
with a fine micro-texture  
for optimal light diffusion.**

The information and illustrations in this brochure are valid at the time of printing. IGP Powder Coatings reserves the right to make any necessary changes at any time and without prior notice. IGP innovations are protected by patents.

**IGP Pulvertechnik AG**  
Ringstrasse 30  
CH-9500 Wil  
Phone +41 71 929 81 11  
info@igp-powder.com  
igp-powder.com

A Member of the DOLD GROUP

2604\_42



[igp-powder.com/en/igp-dura-xal-42](https://igp-powder.com/en/igp-dura-xal-42)

There is an answer  
to every surface.  
**IGP FOR SURE.**



**POWDER  
COATINGS**